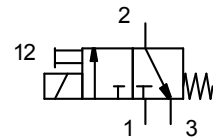




107 Series

3/2-way
NC (normally closed)
Directly operated

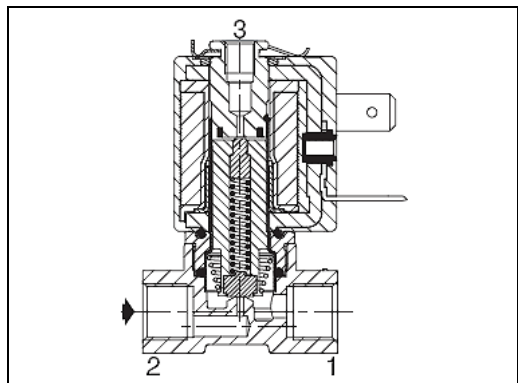


Description

- Compact design
- Wide flow and differential pressure ranges
- Guide tube can be quickly dismantled for easy maintenance
- FPM seal as standard
- Manual operator
- Freely selectable operating voltage (AC/DC) because the magnetic heads are interchangeable

Applications

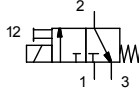
Differential pressure	Max. 15 bar
Viscosity	40 cSt [mm ² /s]
Response time	5 to 10 ms
Medium	Compressed air and neutral, non-toxic gases, water, oil
Temperature range	-10 °C to 100 °C
Seal	FPM



Conformity

UL
CSA
EU Directives

Selection table

3/2		NC function De-energised Normally closed				1 = Pressure port 2 = Consumer 3 = Exhaust Ø M5							
Ø Thread	Ø DN [mm]	Flow rate (Kv)				Permissible diff. pressure (Δ P in bar)			Magnet capacity [W]		Manual operator	Order No.	
		2 1		3 1		Min.	Max. ~	Max. =	~	=			
1 - 2	3	m ³ /h	l/min	m ³ /h	l/min								
G 1/8	M 5	1.2	0.05	0.8	0.05	0.8	0	15	15	4	5.5	Yes	107.11 (230/50) 107.12 (24 DC)

Electrical data

Coils				Power			Ambient temperature of magnet	Drawing
AC		DC		Pickup	Holding			
Part No.	Voltage [V]	Part No.	Voltage [V]	AC			DC	
				[VA]	[VA]	[W]	[W]	
430-429	230/50	430-413	24	12	6	4	4.5 / 5.5	-10 ° to +60 °
430-425	115/50	430-411	12					

Options

- Stainless steel body
- **EPDM** seals
- Ex protection acc. to ATEX 94/9 EC, Zones 1/21-2/22, Category 2-3
- Oxygen applications
- Cable socket with LED and protective circuit

Installation

- Any mounting position
- Valve bodies have two mounting holes
- Screw connections >G< acc. to DIN EN ISO 228-1
- Installation and maintenance instructions enclosed with each valve

Dimensions

