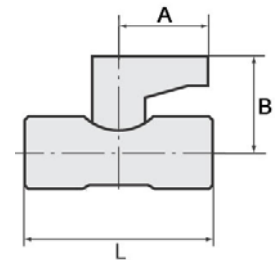


Stainless steel.

Material	Stainless steel 1.4401 (AISI 316)
Stem	Stainless steel 1.4401 (AISI 316)
Seal	FKM
Ball seal	PTFE
Rotating handle	Aluminium
Operating temperature	-20 °C to +120 °C
Operating pressure	max. 63 bar



Mini ball valves, stainless steel, 2 x female thread						
Art. No.	Ident No.	Thread	DN	L mm	A mm	B mm
376.01-ES	103489	G 1/4	7	40.0	22.8	26.5
376.02-ES	103490	G 3/8	7	42.0	22.8	26.5
376.03-ES	103491	G 1/2	9.2	46.0	22.8	28.3



376.01-ES

Mini ball valves, stainless steel, female/male thread						
Art. No.	Ident No.	Thread	DN	L mm	A mm	B mm
377.01-ES	103492	G 1/4	7	40.0	22.8	26.5
377.02-ES	103493	G 3/8	7	42.0	22.8	26.5
377.03-ES	103494	G 1/2	9.2	46.0	22.8	28.3



377.01-ES

Mini ball valves, stainless steel, 2 x male thread						
Art. No.	Ident No.	Thread	DN	L mm	A mm	B mm
379.01-ES	103495	G 1/4	7	50.0	22.8	26.5
379.02-ES	103496	G 3/8	7	50.0	22.8	26.5
379.03-ES	103497	G 1/2	9.2	58.0	22.8	28.3



379.01-ES