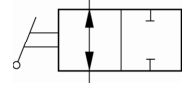
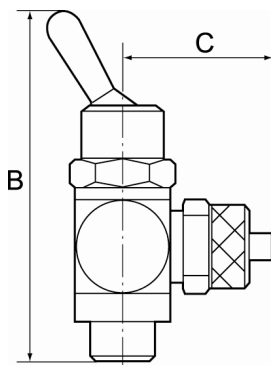


Manually operated toggle valves, 2/2-way types.
 For all applications where compressed air must be switched on or off quickly and easily or a cylinder operated manually.
 Designed as a banjo-type valve with a hollow bolt and ring piece.
 Suitable for screwing directly into the equipment or for panel mounting.
 Compact type of construction, also ideal where space is restricted.



Operating pressure:	Max. 8 bar
Temperature range:	0 °C to +70 °C
Hollow bolt, pivoting arm, toggle:	Nickel-plated brass
Valve trim:	Brass with a bare metal surface
Seal:	NBR
Captive seals:	Polyamide (glass fibre-reinforced)
Panel thread:	M12x0.75 (max. plate thickness 4 mm)



360.014-6



360.018-1/8

2/2-way toggle valves, discharge port on both sides, quick-lock screw fitting

Type No.	Art. No.	Version	Thread	For pipe mm	a/f mm	B mm	C mm
360.018-1/8	107009	2/2-way	G 1/8	G 1/8 female thread	14	55.0	16.0
360.018-5	107010	2/2-way	G 1/8	5/3	14	55.0	25.0
360.018-6	107011	2/2-way	G 1/8	6/4	14	55.0	25.0
360.018-8	107012	2/2-way	G 1/8	8/6	14	55.0	25.0
360.014-1/4	107013	2/2-way	G 1/4	G 1/4 female thread	17	60.0	22.0
360.014-6	107014	2/2-way	G 1/4	6/4	17	60.0	26.5
360.014-8	107015	2/2-way	G 1/4	8/6	17	60.0	27.5
360.014-10	107016	2/2-way	G 1/4	10/8	17	60.0	28.5