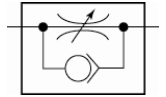


**- Adjustable with slotted-head screwdriver -**

For fine regulation of a cylinder piston speed and precise control of flow rates.  
 Designed as a banjo-type valve with a hollow bolt and ring piece.  
 Can be screwed directly onto the valve or cylinder.  
 Compact type of construction, also ideal where space is restricted.



Operating pressure:

Max. 10 bar

Temperature range:

0 °C to +70 °C

Hollow bolt, pivoting arm, adjusting screw:

Nickel-plated brass

Valve trim:

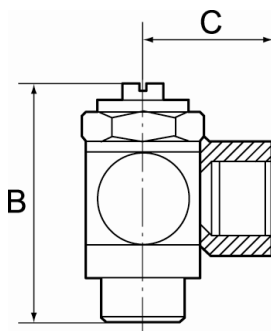
Brass with a bare metal surface

Lip seal, O-ring:

NBR

Captive seals:

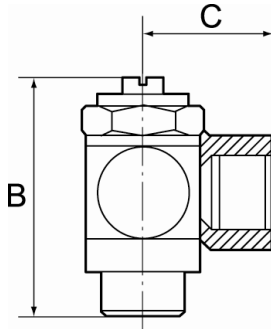
Polyamide (glass fibre-reinforced)



358.005-M5

**Unidirectional flow control valves, outgoing air restriction (»C«), screw connection**

| Type No.    | Art. No. | Thread | For pipe mm         | a/f mm | B mm | C mm |
|-------------|----------|--------|---------------------|--------|------|------|
| 358.005-M5  | 106919   | M5     | M5 female thread    | 8      | 24.5 | 11.5 |
| 358.018-1/8 | 106920   | G 1/8  | G 1/8 female thread | 14     | 32.0 | 16.0 |
| 358.014-1/4 | 106921   | G 1/4  | G 1/4 female thread | 17     | 40.0 | 22.0 |
| 358.038-3/8 | 106922   | G 3/8  | G 3/8 female thread | 20     | 50.0 | 26.0 |
| 358.012-1/2 | 106923   | G 1/2  | G 1/2 female thread | 26     | 61.0 | 32.0 |



358.014-6

**Unidirectional flow control valves, outgoing air restriction (»C«), quick-lock screw fitting**

| Type No.   | Art. No. | Thread | For pipe mm | a/f mm | B mm | C mm |
|------------|----------|--------|-------------|--------|------|------|
| 358.005-4  | 106924   | M5     | 4/2.5       | 8      | 24.5 | 18.0 |
| 358.005-5  | 106925   | M5     | 5/3         | 8      | 24.5 | 19.0 |
| 358.005-6  | 106926   | M5     | 6/4         | 8      | 24.5 | 19.0 |
| 358.018-5  | 106927   | G 1/8  | 5/3         | 14     | 32.0 | 23.0 |
| 358.018-6  | 106928   | G 1/8  | 6/4         | 14     | 32.0 | 25.0 |
| 358.018-8  | 106929   | G 1/8  | 8/6         | 14     | 32.0 | 25.0 |
| 358.014-6  | 106930   | G 1/4  | 6/4         | 17     | 40.0 | 26.5 |
| 358.014-8  | 106931   | G 1/4  | 8/6         | 17     | 40.0 | 27.5 |
| 358.014-10 | 106932   | G 1/4  | 10/8        | 17     | 40.0 | 28.5 |
| 358.038-10 | 106933   | G 3/8  | 10/8        | 20     | 50.0 | 30.5 |