

stainless steel 1.4401, acc. to DIN EN 14420-7 (formerly DIN 2828)

High-quality, robust, universal coupling system with a safety clamp for quick and easy connection of two hoses or for joining one hose to a machine connection.

A male part and a female part are joined together by shifting the handles.  
 There is no need to turn the hose!

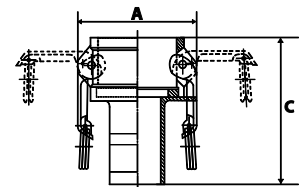
Kamlok stainless steel couplings are designed for use with corrosive media in the chemical and petrochemical industries, steelmaking, shipbuilding, agriculture, etc.

Pressure range max. 16 bar  
 Temperature range -20 °C to +95 °C  
 Sealant NBR, resistant to oils and benzene  
 all female threaded couplings and connectors  
 with female thread sealing ring made of PTFE



#### Kamlok female couplers with hose stem, Part C

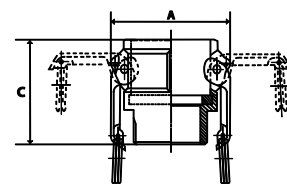
Art. No.	Ident No.	For hose I.D.	For plug Ø mm	A mm	C mm
1112.34-ES	108099	19	32	61.3	91.0
1112.10-ES	108100	25	37	68.2	94.0
1112.114-ES	108101	32	46	79.7	104.0
1112.112-ES	108102	38	54	87.4	110.0
1112.20-ES	108103	50	64	97.0	128.0
1112.212-ES	108104	63	76.5	109.5	131.5
1112.30-ES	108105	75	92	131.8	151.5
1112.40-ES	108106	100	120	159.9	168.0



1112.34-ES

#### Kamlok female couplers, male threaded, Part B

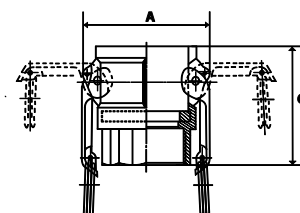
Art. No.	Ident No.	Thread	For plug Ø mm	A mm	C mm
1113.34-ES	108107	R 3/4	32	61.3	45.5
1113.10-ES	108108	R 1	37	68.2	55.5
1113.114-ES	108109	R 1 1/4	46	79.7	63.0
1113.112-ES	108110	R 1 1/2	54	87.4	65.5
1113.20-ES	108111	R 2	64	97.0	75.8
1113.212-ES	108112	R 2 1/2	76.5	109.5	85.5
1113.30-ES	108113	R 3	92	131.8	84.5
1113.40-ES	108114	R 4	120	159.9	88.5



1113.114-ES

**Kamlok female couplers, female threaded, Part D**

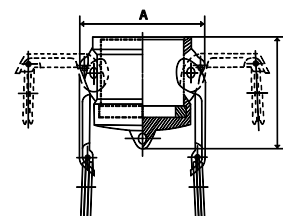
Art. No.	Ident No.	Thread	For plug Ø mm	A mm	C mm
1114.34-ES	108115	G 3/4	32	61.3	45.8
1114.10-ES	108116	G 1	37	68.2	55.0
1114.114-ES	108117	G 1 1/4	46	79.7	63.0
1114.112-ES	108118	G 1 1/2	54	87.4	65.0
1114.20-ES	108119	G 2	64	97.0	71.0
1114.212-ES	108120	G 2 1/2	76.5	109.5	82.5
1114.30-ES	108121	G 3	92	131.8	84.0
1114.40-ES	108122	G 4	120	159.9	90.0



1114.114-ES

**Kamlok dust caps for male adapters, Part DC**

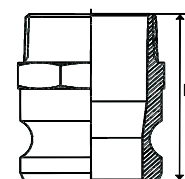
Art. No.	Ident No.	Size	For plug Ø mm	A mm	C mm
1115.34-ES	108123	3/4	32	61.3	40.0
1115.10-ES	108124	1	37	68.2	45.0
1115.114-ES	108125	1 1/4	46	79.7	56.0
1115.112-ES	108126	1 1/2	54	87.4	55.0
1115.20-ES	108127	2	64	97.0	62.0
1115.212-ES	108128	2 1/2	76.5	109.5	63.0
1115.30-ES	108129	3	92	131.8	67.0
1115.40-ES	108130	4	120	159.9	70.5



1115.114-ES

**Kamlok male adapters, male threaded, Part F**

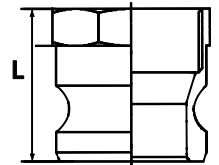
Art. No.	Ident No.	Thread	Plug Ø mm	L mm
1116.34-ES	108131	R 3/4	32	53.5
1116.10-ES	108132	R 1	37	65.0
1116.114-ES	108133	R 1 1/4	46	72.0
1116.112-ES	108134	R 1 1/2	53	73.8
1116.20-ES	108135	R 2	63	83.5
1116.212-ES	108136	R 2 1/2	76	89.5
1116.30-ES	108137	R 3	92	91.0
1116.40-ES	108138	R 4	120	97.0



1116.10-ES

**Kamlok male adapters, female threaded, Part A**

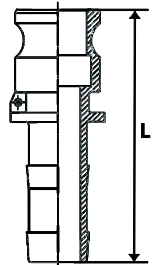
Art. No.	Ident No.	Thread	Plug Ø mm	L mm
1117.34-ES	108139	G 3/4	32	36.0
1117.10-ES	108140	G 1	37	44.7
1117.114-ES	108141	G 1 1/4	46	49.5
1117.112-ES	108142	G 1 1/2	53	50.5
1117.20-ES	108143	G 2	63	61.0
1117.212-ES	108144	G 2 1/2	76	77.5
1117.30-ES	108145	G 3	92	67.0
1117.40-ES	108146	G 4	120	71.5



1117.114-ES

**Kamlok male adapters with hose stem, Part E**

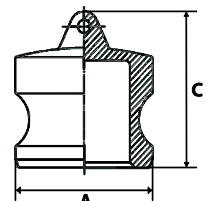
Art. No.	Ident No.	For hose I.D.	Plug Ø mm	L mm
1118.34-ES	108147	19	32	86.7
1118.10-ES	108148	25	37	97.5
1118.114-ES	108149	32	46	112.0
1118.112-ES	108150	38	53	112.0
1118.20-ES	108151	50	63	143.0
1118.212-ES	108152	63	76	138.0
1118.30-ES	108153	75	92	159.5
1118.40-ES	108154	100	120	181.0



1118.10-ES

**Kamlok male dust plugs, Part DP**

Art. No.	Ident No.	Size	Plug Ø mm	A mm	C mm
1119.34-ES	108155	3/4	32	32.1	35.0
1119.10-ES	108156	1	37	36.6	42.0
1119.114-ES	108157	1 1/4	46	45.4	45.0
1119.112-ES	108158	1 1/2	53	53.4	46.0
1119.20-ES	108159	2	63	63.0	54.0
1119.212-ES	108160	2 1/2	76	57.7	56.0
1119.30-ES	108161	3	92	91.4	56.0
1119.40-ES	108162	4	120	119.5	58.0



1119.10-ES

**Replacement seals for Kamlok couplings, NBR**

Art. No.	Ident No.	For coupling DN
108.201	108163	20 (3/4")
108.202	108164	25 (1")
108.203	108165	32 (1 1/4")
108.204	108166	40 (1 1/2")
108.205	108167	50 (2")
108.206	108168	65 (2 1/2")
108.207	108169	75 (3")
108.208	108170	100 (4")



108.202

**Replacement chains for Kamlok couplings, stainless steel**

Art. No.	Ident No.
108.300	108098



108.300

**Safety clip for Kamlok couplings, galvanized steel, for size 1 1/2, 1 1/4**

Art. No.	Ident No.	For coupling
USC 200	124737	108103, 108109, 108110, 108111, 108117, 108126, 108125