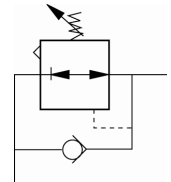


Piston pressure regulator with self-relieving design, hollow bolt and pivoting ring piece.

The regulator is connected directly into the consumer (e.g. cylinder, handling equipment, etc.). The working pressure can thus be adapted to the specific application.



Control range:

Input pressure:

Temperature range:

Hollow bolt, pivoting arm, adjusting screw:

Valve trim:

O-rings and lip seal:

Captive seals:

0 to 8 bar

Max. 10 bar

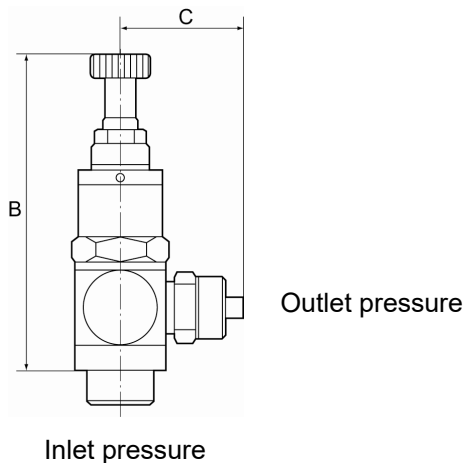
0 °C to +70 °C

Nickel-plated brass

Brass with a bare metal surface

NBR

Polyamide (glass fibre-reinforced)



362.014-6

## Mini pressure regulators, discharge port on thread, quick-lock screw fitting

Art. No.	Type No.	Thread	For pipe mm	a/f mm	B mm	C mm
107038	362.018-1/8	G 1/8	G 1/8 female thread	15	56.0	16.0
107039	362.018-5	G 1/8	5/3	15	56.0	25.0
107040	362.018-6	G 1/8	6/4	15	56.0	25.0
107041	362.018-8	G 1/8	8/6	15	56.0	25.0
107042	362.014-6	G 1/4	6/4	17	63.0	26.5
107043	362.014-8	G 1/4	8/6	17	63.0	27.5
107044	362.014-10	G 1/4	10/8	17	63.0	28.5