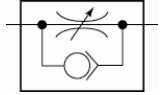


- Adjustable with slotted-head screwdriver -

For fine regulation of a cylinder piston speed and precise control of flow rates.
 Designed as a banjo-type valve with a hollow bolt and ring piece.
 Can be screwed directly onto the valve or cylinder.
 Compact type of construction, also ideal where space is restricted.



Operating pressure:

Max. 10 bar

Temperature range:

0 °C to +70 °C

Hollow bolt, pivoting arm, adjusting screw:

Nickel-plated brass

Valve trim:

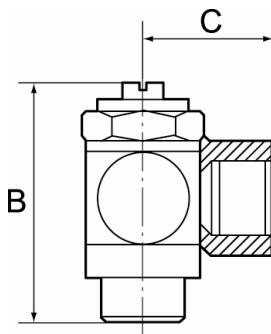
Brass with a bare metal surface

Lip seal, O-ring:

NBR

Captive seals:

Polyamide (glass fibre-reinforced)



343.014-6



343.005-4

Unidirectional flow control valves, outgoing air restriction (»C«), plug-in connector

Type No.	Art. No.	Thread	For pipe mm	a/f mm	B mm	C mm
343.005-4	106934	M5	4	8	24.5	18.6
343.005-6	106935	M5	6	8	24.5	21.7
343.018-4	106936	G 1/8	4	14	32.0	20.6
343.018-6	106937	G 1/8	6	14	32.0	22.7
343.018-8	106938	G 1/8	8	14	32.0	23.7
343.014-6	106939	G 1/4	6	17	40.0	24.2
343.014-8	106940	G 1/4	8	17	40.0	24.7
343.014-10	106941	G 1/4	10	17	40.0	26.8
343.038-10	106942	G 3/8	10	20	50.0	28.8