

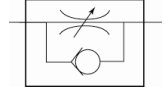
- Adjustable with slotted-head screwdriver -

For fine regulation of a cylinder piston speed in the forward and return motion and precise control of flow rates.

Designed as a banjo-type valve with a hollow bolt and ring piece.

Can be screwed directly onto the valve or cylinder to restrict the incoming air.

Compact type of construction, also ideal where space is restricted.



Operating pressure:

Max. 10 bar

Temperature range:

0 °C to +70 °C

Hollow bolt, pivoting arm, adjusting screw:

Nickel-plated brass

Valve trim:

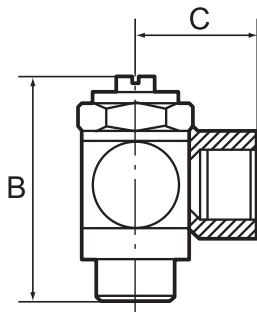
Brass with a bare metal surface

Lip seal, O-ring:

NBR

Captive seals:

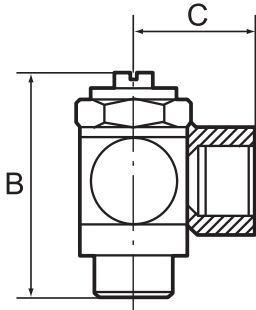
Polyamide (glass fibre-reinforced)



357.005-M5

Unidirectional flow control valves, incoming air restriction (»V«), screw connection

Type No.	Art. No.	Thread	Connection	a/f mm	B mm	C mm
357.005-M5	106875	M5	M5 female thread	8	24.5	11.5
357.018-1/8	106876	G 1/8	G 1/8 female thread	14	32.0	16.0
357.014-1/4	106877	G 1/4	G 1/4 female thread	17	40.0	22.0
357.038-3/8	106878	G 3/8	G 3/8 female thread	20	50.0	26.0



357.014-6

Unidirectional flow control valves, incoming air restriction (»V«), quick-lock screw fitting

Type No.	Art. No.	Thread	For pipe mm	a/f mm	B mm	C mm
357.005-4	106879	M5	4/2.5	8	24.5	18.0
357.005-5	106880	M5	5/3	8	24.5	19.0
357.005-6	106881	M5	6/4	8	24.5	19.0
357.018-5	106882	G 1/8	5/3	14	32.0	23.0
357.018-6	106883	G 1/8	6/4	14	32.0	25.0
357.018-8	106884	G 1/8	8/6	14	32.0	25.0
357.014-6	106885	G 1/4	6/4	17	40.0	26.5
357.014-8	106886	G 1/4	8/6	17	40.0	27.5
357.014-10	106887	G 1/4	10/8	17	40.0	28.5
357.038-10	106888	G 3/8	10/8	20	50.0	30.5