

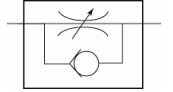
- Adjustable with slotted-head screwdriver -

For fine regulation of a cylinder piston speed in the forward and return motion and precise control of flow rates.

Designed as a banjo-type valve with a hollow bolt and ring piece.

Can be screwed directly onto the valve or cylinder to restrict the incoming air.

Compact type of construction, also ideal where space is restricted.



Operating pressure:

Temperature range:

Hollow bolt, pivoting arm, adjusting screw:

Valve trim:

Lip seal, O-ring:

Captive seals:

Max. 10 bar

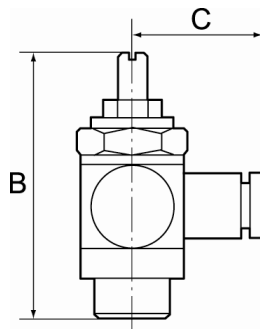
0 °C to +70 °C

Nickel-plated brass

Brass with a bare metal surface

NBR

Polyamide (glass fibre-reinforced)



342.005-4



342.014-6

Unidirectional flow control valves, incoming air restriction (»V«), plug-in connector

Type No.	Art. No.	Thread	For pipe mm	a/f mm	B mm	C mm
342.005-4	106889	M5	4	8	24.5	18.6
342.005-6	106890	M5	6	8	24.5	21.7
342.018-4	106891	G 1/8	4	14	32.0	20.6
342.018-6	106892	G 1/8	6	14	32.0	22.7
342.018-8	106893	G 1/8	8	14	32.0	23.7
342.014-6	106894	G 1/4	6	17	40.0	24.2
342.014-8	106895	G 1/4	8	17	40.0	24.7
342.014-10	106896	G 1/4	10	17	40.0	26.8
342.038-10	106897	G 3/8	10	20	50.0	28.3