



Distributor blocks

VT 15 XXX

Ident No. VT 15502 to VT 15466

Aluminium alloy
6005/T6 or 6082
12 bar
Temperature range:
-40 °C to +200 °C

Ordering information

Outlets on one side

| Art. No. | Ident No. | Ports | |
|----------|-----------|---------|---------|
| | | Inputs | Outputs |
| VT 15502 | 112524 | 2 x 1/8 | 2 x M5 |
| VT 15503 | 112525 | | 3 x M5 |
| VT 15504 | 112526 | | 4 x M5 |
| VT 15506 | 112527 | | 6 x M5 |
| | | | |
| VT 15102 | 112528 | 2 x 1/4 | 2 x 1/8 |
| VT 15103 | 112529 | | 3 x 1/8 |
| VT 15104 | 112530 | | 4 x 1/8 |
| VT 15106 | 112531 | | 6 x 1/8 |
| | | | |
| VT 15202 | 112532 | 2 x 3/8 | 2 x 1/4 |
| VT 15203 | 112533 | | 3 x 1/4 |
| VT 15204 | 112534 | | 4 x 1/4 |
| VT 15206 | 112535 | | 6 x 1/4 |
| | | | |
| VT 15302 | 112536 | 2 x 3/8 | 2 x 1/8 |
| VT 15303 | 112537 | | 3 x 1/8 |
| VT 15304 | 112538 | | 4 x 1/8 |
| VT 15306 | 112539 | | 6 x 1/8 |
| | | | |
| VT 15402 | 112540 | 2 x 1/2 | 2 x 1/4 |
| VT 15403 | 112541 | | 3 x 1/4 |
| VT 15404 | 112542 | | 4 x 1/4 |
| VT 15406 | 112543 | | 6 x 1/4 |
| | | | |

Ordering information

Outlets on both sides

| Art. No. | Ident No. | Ports | |
|----------|-----------|---------|-----------|
| | | Inputs | Outputs |
| VT 15522 | 112544 | 2 x 1/8 | 2+2 x M5 |
| VT 15533 | 112545 | | 3+3 x M5 |
| VT 15544 | 112546 | | 4+4 x M5 |
| VT 15566 | 112547 | | 6+6 x M5 |
| | | | |
| VT 15122 | 112548 | 2 x 1/4 | 2+2 x 1/8 |
| VT 15133 | 112549 | | 3+3 x 1/8 |
| VT 15144 | 112550 | | 4+4 x 1/8 |
| VT 15166 | 112551 | | 6+6 x 1/8 |
| | | | |
| VT 15222 | 112552 | 2 x 3/8 | 2+2 x 1/4 |
| VT 15233 | 112553 | | 3+3 x 1/4 |
| VT 15244 | 112554 | | 4+4 x 1/4 |
| VT 15266 | 112555 | | 6+6 x 1/4 |
| | | | |
| VT 15422 | 112556 | 2 x 1/2 | 2+2 x 1/4 |
| VT 15433 | 112557 | | 3+3 x 1/4 |
| VT 15444 | 112558 | | 4+4 x 1/4 |
| VT 15466 | 112559 | | 6+6 x 1/4 |
| | | | |

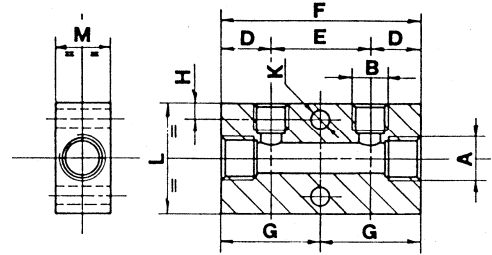
Materials

Aluminium, -Tumbled surface

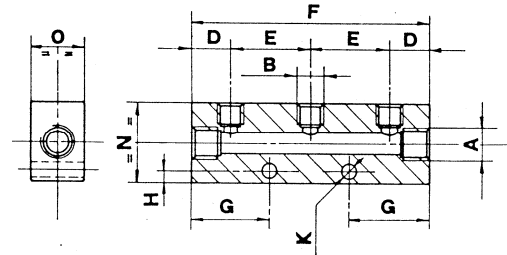
On request: Anodised surface

Dimensions [mm]

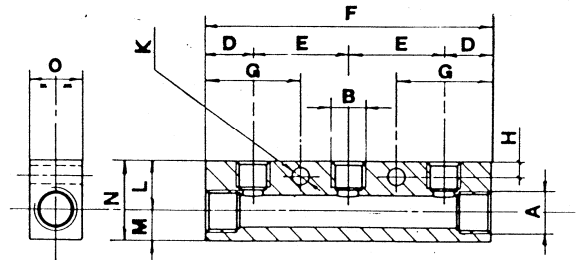
| Art. No. | A | B | D mm | E mm | F mm | G mm | H mm | L mm | M mm | K mm |
|----------|-------|-------|------|------|------|------|------|------|------|------|
| VT 15502 | G 1/8 | M5 | 15 | 15 | 45 | 22.5 | 3.5 | 20 | 15 | 4.25 |
| VT 15102 | G 1/4 | G 1/8 | 15 | 30 | 60 | 30.0 | 4.5 | 30 | 20 | 5.50 |
| VT 15202 | G 3/8 | G 1/4 | 18 | 36 | 72 | 36.0 | 6.0 | 40 | 20 | 6.50 |
| VT 15302 | G 3/8 | G 1/8 | 18 | 30 | 66 | 33.0 | 6.0 | 40 | 20 | 5.50 |
| VT 15402 | G 1/2 | G 1/4 | 22 | 36 | 80 | 40.0 | 6.0 | 40 | 30 | 6.50 |



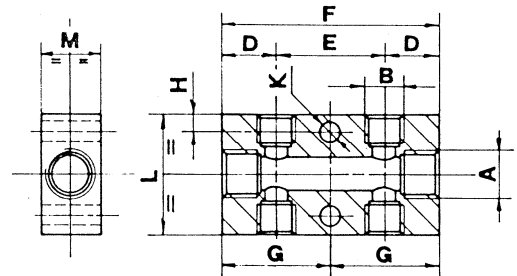
| Art. No. | A | B | D mm | E mm | F mm | G mm | H mm | K mm | N mm | O mm |
|----------|-------|-------|------|------|------|------|------|------|------|------|
| VT 15504 | G 1/8 | M5 | 15 | 15 | 75 | 22.5 | 3.5 | 4.25 | 20 | 15 |
| VT 15104 | G 1/4 | G 1/8 | 15 | 30 | 120 | 30.0 | 4.5 | 5.50 | 30 | 20 |
| VT 15506 | G 1/8 | M5 | 15 | 15 | 105 | 22.5 | 3.5 | 4.25 | 20 | 15 |
| VT 15106 | G 1/4 | G 1/8 | 15 | 30 | 180 | 30.0 | 4.5 | 5.50 | 30 | 20 |



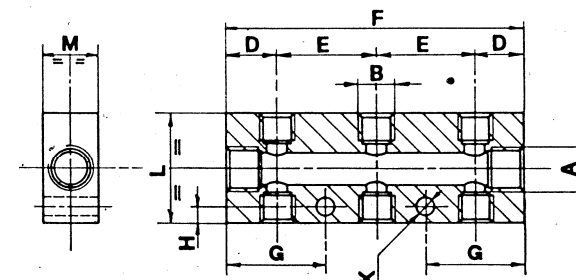
| Art. No. | A | B | D mm | E mm | F mm | G mm | H mm | K mm | L mm | M mm | N mm | O mm |
|----------|-------|-------|------|------|------|------|------|------|------|------|------|------|
| VT 15204 | G 3/8 | G 1/4 | 18 | 36 | 144 | 36 | 6.0 | 6.50 | 19 | 11 | 30 | 20 |
| VT 15304 | G 3/8 | G 1/8 | 18 | 30 | 126 | 33 | 4.5 | 5.50 | 19 | 11 | 30 | 20 |
| VT 15404 | G 1/2 | G 1/4 | 22 | 36 | 152 | 40 | 6.0 | 6.50 | 20 | 20 | 40 | 30 |
| VT 15206 | G 3/8 | G 1/4 | 18 | 36 | 216 | 36 | 6.0 | 6.50 | 19 | 11 | 30 | 20 |
| VT 15306 | G 3/8 | G 1/8 | 18 | 30 | 186 | 33 | 4.5 | 5.50 | 19 | 11 | 30 | 20 |
| VT 15406 | G 1/2 | G 1/4 | 22 | 36 | 224 | 40 | 6.0 | 6.50 | 24 | 16 | 40 | 30 |



| Art. No. | A | B | D mm | E mm | F mm | G mm | H mm | K mm | L mm | M mm |
|----------|-------|-------|------|------|------|------|------|------|------|------|
| VT 15522 | G 1/8 | M5 | 15 | 15 | 45 | 22.5 | 3.5 | 4.25 | 20 | 15 |
| VT 15122 | G 1/4 | G 1/8 | 15 | 30 | 60 | 30 | 4.5 | 5.50 | 30 | 20 |
| VT 15222 | G 3/8 | G 1/4 | 18 | 36 | 72 | 36 | 6.0 | 6.5 | 40 | 20 |
| VT 15322 | G 3/8 | G 1/8 | 18 | 30 | 66 | 33 | 4.5 | 5.25 | 40 | 20 |
| VT 15422 | G 1/2 | G 1/4 | 22 | 36 | 80 | 40 | 6.0 | 6.5 | 40 | 30 |

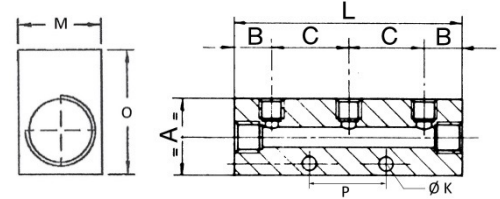


| Art. No. | A | B | D mm | E mm | F mm | G mm | H mm | K mm | L mm | M mm |
|----------|-------|-------|------|------|------|------|------|------|------|------|
| VT 15544 | G 1/8 | M5 | 15 | 15 | 75 | 22.5 | 3.5 | 4.25 | 20 | 15 |
| VT 15144 | G 1/4 | G 1/8 | 15 | 30 | 120 | 30 | 4.5 | 5.50 | 30 | 20 |
| VT 15244 | G 3/8 | G 1/4 | 18 | 36 | 144 | 36 | 6.0 | 6.5 | 40 | 20 |
| VT 15344 | G 3/8 | G 1/8 | 18 | 30 | 126 | 33 | 4.5 | 5.25 | 40 | 20 |
| VT 15444 | G 1/2 | G 1/4 | 22 | 36 | 152 | 40 | 6.0 | 6.5 | 40 | 30 |

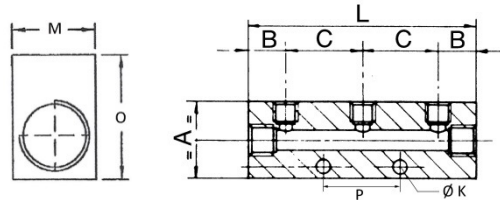


Dimensions [mm]

| Art. No. | Input | Output | L mm | A mm | B mm | C mm | P mm | ØK mm | M mm | O mm |
|----------|---------|---------|---------|---------|---------|---------|---------|----------|---------|---------|
| VT 15503 | 2 x 1/8 | 3 x M5 | 60.0 | 20.0 | 15.0 | 15.0 | 15.0 | 4.25 | 15.0 | 20.0 |
| VT 15103 | 2 x 1/4 | 3 x 1/8 | 90.0 | 30.0 | 15.0 | 30.0 | 30.0 | 5.5 | 20.0 | 30.0 |
| VT 15203 | 2 x 3/8 | 3 x 1/4 | 108.0 | 30.0 | 18.0 | 36.0 | 36.0 | 6.5 | 20.0 | 30.0 |
| VT 15303 | 2 x 3/8 | 3 x 1/8 | 96.0 | 30.0 | 18.0 | 30.0 | 30.0 | 5.5 | 20.0 | 30.0 |
| VT 15403 | 2 x 1/2 | 3 x 1/4 | 116.0 | 40.0 | 22.0 | 36.0 | 36.0 | 6.5 | 30.0 | 40.0 |



| Art. No. | Input | Output | L mm | A mm | B mm | C mm | P mm | ØK mm | M mm | O mm |
|----------|---------|-------------|---------|---------|---------|---------|---------|----------|---------|---------|
| VT 15533 | 2 x 1/8 | 3 + 3 x M5 | 60.0 | 20.0 | 15.0 | 15.0 | 15.0 | 4.25 | 15.0 | 20.0 |
| VT 15133 | 2 x 1/4 | 3 + 3 x 1/8 | 90.0 | 30.0 | 15.0 | 30.0 | 30.0 | 5.5 | 20.0 | 30.0 |
| VT 15233 | 2 x 3/8 | 3 + 3 x 1/4 | 108.0 | 40.0 | 18.0 | 36.0 | 36.0 | 6.5 | 20.0 | 40.0 |
| VT 15433 | 2 x 1/2 | 3 + 3 x 1/4 | 116.0 | 40.0 | 22.0 | 36.0 | 36.0 | 6.5 | 30.0 | 40.0 |



| Art. No. | Input | Output | L mm | A mm | B mm | C mm | P mm | ØK mm | M mm | O mm |
|----------|---------|-------------|---------|---------|---------|---------|---------|----------|---------|---------|
| VT 15566 | 2 x 1/8 | 6 + 6 x M5 | 105.0 | 20.0 | 15.0 | 15.0 | 60.0 | 4.25 | 15.0 | 20.0 |
| VT 15166 | 2 x 1/4 | 6 + 6 x 1/8 | 180.0 | 30.0 | 15.0 | 30.0 | 120.0 | 5.5 | 20.0 | 30.0 |
| VT 15266 | 2 x 3/8 | 6 + 6 x 1/4 | 216.0 | 40.0 | 18.0 | 36.0 | 144.0 | 6.5 | 20.0 | 40.0 |
| VT 15466 | 2 x 1/2 | 6 + 6 x 1/4 | 224.0 | 40.0 | 22.0 | 36.0 | 144.0 | 6.5 | 30.0 | 40.0 |

