

- Adjustable with knurled screw -

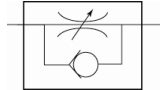
For fine regulation of a cylinder piston speed in the forward and return motion and precise control of flow rates.

Designed as a banjo-type valve with a hollow bolt and ring piece.

Can be screwed directly onto the valve or cylinder.

Compact type of construction, also ideal where space is restricted.

On the version with a knurled screw, the set volumetric flow rate can be locked with the hexagon nut to obtain a fixed setting.



Operating pressure:

Max. 10 bar

Temperature range:

0 °C to +70 °C

Hollow bolt, pivoting arm, adjusting screw:

Nickel-plated brass

Valve trim:

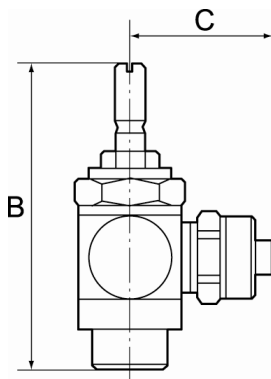
Brass with a bare metal surface

Lip seal, O-ring:

NBR

Captive seals:

Polyamide (glass fibre-reinforced)



341.005-4

Unidirectional flow control valves, incoming air restriction (»V«), plug-in connector

Type No.	Art. No.	Thread	For pipe mm	a/f mm	B mm	C mm
341.005-4	106911	M5	4	8	38.9	18.6
341.005-6	106912	M5	6	8	38.9	21.7
341.018-4	106913	G 1/8	4	14	42.4	20.6
341.018-6	106914	G 1/8	6	14	42.4	22.7
341.018-8	106915	G 1/8	8	14	42.4	23.7
341.014-6	106916	G 1/4	6	17	51.4	24.2
341.014-8	106917	G 1/4	8	17	51.4	24.7
341.014-10	106918	G 1/4	10	17	51.4	26.8