

- Adjustable with knurled screw -

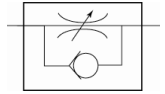
For fine regulation of a cylinder piston speed in the forward and return motion and precise control of flow rates.

Designed as a banjo-type valve with a hollow bolt and ring piece.

Can be screwed directly onto the valve or cylinder.

Compact type of construction, also ideal where space is restricted.

On the version with a knurled screw, the set volumetric flow rate can be locked with the hexagon nut to obtain a fixed setting.



Operating pressure:

Max. 10 bar

Temperature range:

0 °C to +70 °C

Hollow bolt, pivoting arm, adjusting screw:

Nickel-plated brass

Valve trim:

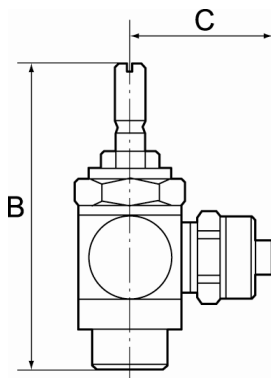
Brass with a bare metal surface

Lip seal, O-ring:

NBR

Captive seals:

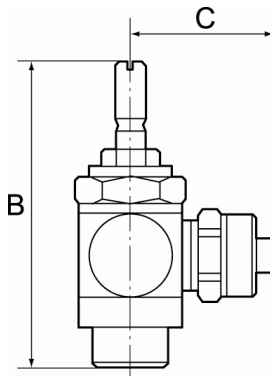
Polyamide (glass fibre-reinforced)



339.018-1/8

Unidirectional flow control valves, incoming air restriction (»V«), screw connection

Type No.	Art. No.	Thread	For pipe mm	a/f mm	B mm	C mm
339.005-M5	106898	M5	M5 female thread	8	38.9	11.5
339.018-1/8	106899	G 1/8	G 1/8 female thread	14	42.4	16.0
339.014-1/4	106900	G 1/4	G 1/4 female thread	17	51.0	22.0
339.038-3/8	106901	G 3/8	G 3/8 female thread	20	63.0	26.0



339.005-6



339.014-6

Unidirectional flow control valves, incoming air restriction (»V«), quick-lock screw fitting

Type No.	Art. No.	Thread	For pipe mm	a/f mm	B mm	C mm
339.005-4	106902	M5	4/2.5	8	38.9	18.0
339.005-5	106903	M5	5/3	8	38.9	19.0
339.005-6	106904	M5	6/4	8	38.9	19.0
339.018-5	106905	G 1/8	5/3	14	42.4	23.0
339.018-6	106906	G 1/8	6/4	14	42.4	25.0
339.018-8	106907	G 1/8	8/6	14	42.4	25.0
339.014-6	106908	G 1/4	6/4	17	51.4	26.5
339.014-8	106909	G 1/4	8/6	17	51.4	27.5
339.014-10	106910	G 1/4	10/8	17	51.4	28.5