

aluminium, acc. to A-A 59326 25.09.98 (formerly MIL - C 27487)

Coupling system for quick and easy connection of two hoses or for joining one hose to a machine connection.

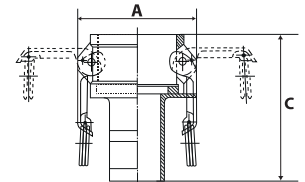
A male part and a female part are joined together by shifting the handles.  
There is no need to turn the hose!

Kamlok couplings are used for a wide range of applications in industrial plant and mechanical engineering, tank and container construction, the chemical industry, food processing, mining, refuelling systems, defence technology, etc.

Pressure range                      max. 16 bar  
Temperature range                max. +68 °C  
Sealant                                NBR, resistant to oils and benzine

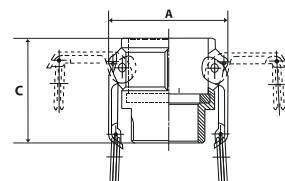
### Kamlok female couplers with hose stem, Part C

Art. No.	Ident No.	For hose I.D.	For plug Ø mm	A mm	C mm
1112.34	108026	19	32	61.3	90.5
1112.10	108027	25	37	68.2	95.0
1112.114	108028	32	45	79.7	102.5
1112.112	108029	38	53	87.4	116.5
1112.20	108030	50	63	97.0	134.5
1112.212	108031	63	76	109.5	142.4
1112.30	108032	75	92	131.8	159.0
1112.40	108033	100	120	159.9	162.5



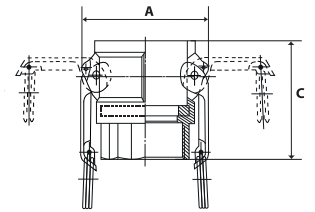
### Kamlok female couplers, male threaded, Part B

Art. No.	Ident No.	Thread	For plug Ø mm	A mm	C mm
1113.34	108034	R 3/4	32	61.3	52.2
1113.10	108035	R 1	37	68.2	59.0
1113.114	108036	R 1 1/4	45	79.7	65.5
1113.112	108037	R 1 1/2	53	87.4	69.5
1113.20	108038	R 2	63	97.0	77.0
1113.212	108039	R 2 1/2	76	109.5	84.5
1113.30	108040	R 3	92	131.8	89.5
1113.40	108041	R 4	120	159.9	92.0



**Kamlok female couplers, female threaded, Part D**

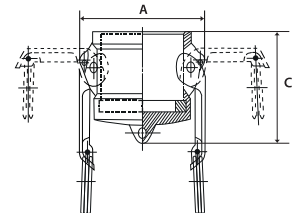
Art. No.	Ident No.	Thread	For plug Ø mm	A mm	C mm
1114.34	108042	G 3/4	32	61.3	52.2
1114.10	108043	G 1	37	68.2	59.0
1114.114	108044	G 1 1/4	45	79.7	67.5
1114.112	108045	G 1 1/2	53	87.4	69.5
1114.20	108046	G 2	63	97.0	76.0
1114.212	108047	G 2 1/2	76	109.5	84.5
1114.30	108048	G 3	92	131.8	89.5
1114.40	108049	G 4	120	159.9	92.0



1114.112

**Kamlok dust caps for male adapters, Part DC**

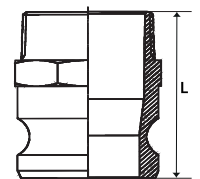
Art. No.	Ident No.	Size	For plug Ø mm	A mm	C mm
1115.34	108050	3/4	32	61.3	45.2
1115.10	108051	1	37	68.2	57.4
1115.114	108052	1 1/4	45	79.7	65.0
1115.112	108053	1 1/2	53	87.4	62.0
1115.20	108054	2	63	97.0	69.0
1115.212	108055	2 1/2	76	109.5	77.5
1115.30	108056	3	92	131.8	76.5
1115.40	108057	4	120	159.9	78.0



1115.20

**Kamlok male adapters, male threaded, Part F**

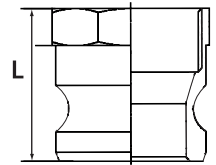
Art. No.	Ident No.	Thread	Plug Ø mm	L mm
1116.34	108058	R 3/4	32	55.0
1116.10	108059	R 1	37	67.8
1116.114	108060	R 1 1/4	45	78.0
1116.112	108061	R 1 1/2	53	76.0
1116.20	108062	R 2	63	83.5
1116.212	108063	R 2 1/2	76	97.0
1116.30	108064	R 3	92	99.5
1116.40	108065	R 4	120	104.5



1116.10

### Kamlok male adapters, female threaded, Part A

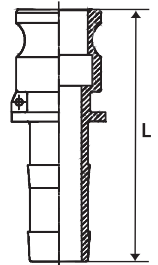
Art. No.	Ident No.	Thread	Plug Ø mm	L mm
1117.34	108066	G 3/4	32	41.0
1117.10	108067	G 1	37	50.8
1117.114	108068	G 1 1/4	45	55.0
1117.112	108069	G 1 1/2	53	56.0
1117.20	108070	G 2	63	59.0
1117.212	108071	G 2 1/2	76	79.2
1117.30	108072	G 3	92	71.7
1117.40	108073	G 4	120	71.2



1117.112

### Kamlok male adapters with hose stem, Part E

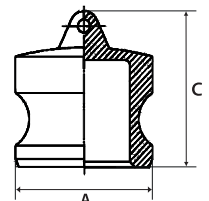
Art. No.	Ident No.	For hose I.D.	Plug Ø mm	L mm
1118.34	108074	19	32	85.3
1118.10	108075	25	37	100.8
1118.114	108076	32	45	109.0
1118.112	108077	38	53	123.5
1118.20	108078	50	63	142.0
1118.212	108079	63	76	150.5
1118.30	108080	75	92	157.0
1118.40	108081	100	120	166.0



1118.112

### Kamlok male dust plugs, Part DP

Art. No.	Ident No.	Size	Plug Ø mm	A mm	C mm
1119.34	108082	3/4	32	32.1	38.0
1119.10	108083	1	37	36.6	52.3
1119.114	108084	1 1/4	45	45.4	57.5
1119.112	108085	1 1/2	53	53.4	57.0
1119.20	108086	2	63	63.0	63.5
1119.212	108087	2 1/2	76	57.7	67.5
1119.30	108088	3	92	91.4	67.5
1119.40	108089	4	120	119.5	69.8



1119.20

### Replacement seals for Kamlok couplings, NBR

Art. No.	Ident No.	For coupling DN
108.101	108090	20 (3/4")
108.102	108091	25 (1")
108.103	108092	32 (1 1/4")
108.104	108093	40 (1 1/2")
108.105	108094	50 (2")
108.106	108095	65 (2 1/2")
108.107	108096	75 (3")
108.108	108097	100 (4")



108.102

### Replacement chains for Kamlok couplings, stainless steel

Art. No.	Ident No.
108.300	108098



108.300