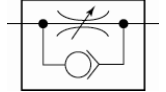


**- Adjustable with knurled screw -**

For fine regulation of a cylinder piston speed and precise control of flow rates. Designed as a banjo-type valve with a hollow bolt and ring piece. Can be screwed directly onto the valve or cylinder. Compact type of construction, also ideal where space is restricted. On the version with a knurled screw, the set volumetric flow rate can be locked with the hexagon nut to obtain a fixed setting.



Operating pressure:

Max. 10 bar

Temperature range:

0 °C to +70 °C

Hollow bolt, pivoting arm, adjusting screw:

Nickel-plated brass

Valve trim:

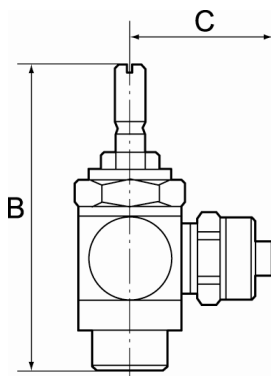
Brass with a bare metal surface

Lip seal, O-ring:

NBR

Captive seals:

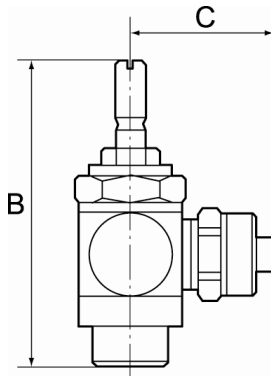
Polyamide (glass fibre-reinforced)



333.014-1/4

**Unidirectional flow control valves, outgoing air restriction (»C«), screw connection**

Type No.	Art. No.	Thread	For pipe mm	a/f mm	B mm	C mm
333.005-M5	106943	M5	M5 female thread	8	38.9	11.5
333.018-1/8	106944	G 1/8	G 1/8 female thread	14	42.0	16.0
333.014-1/4	106945	G 1/4	G 1/4 female thread	17	51.0	22.0
333.038-3/8	106946	G 3/8	G 3/8 female thread	20	63.0	26.0
333.012-1/2	106947	G 1/2	G 1/2 female thread	26	81.0	32.0



333.005-6

**Unidirectional flow control valves, outgoing air restriction (»C«), quick-lock screw fitting**

Type No.	Art. No.	Thread	For pipe mm	a/f mm	B mm	C mm
333.005-4	106948	M5	4/2.5	8	38.9	18.0
333.005-5	106949	M5	5/3	8	38.9	19.0
333.005-6	106950	M5	6/4	8	38.9	19.0
333.018-6	106951	G 1/8	6/4	14	42.4	25.0
333.018-8	106952	G 1/8	8/6	14	42.4	25.0
333.014-6	106953	G 1/4	6/4	17	51.4	26.5
333.014-8	106954	G 1/4	8/6	17	51.4	27.5
333.014-10	106955	G 1/4	10/8	17	51.4	28.5