

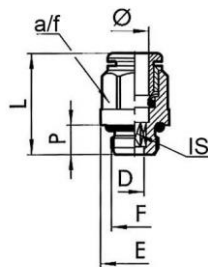
The advanced version of our highly successful push-in fittings series manufactured in nickel-plated brass.

Advantages of this new, optimized series:

- Much easier connection and disconnection of the hose, even with repeated mounting
- Can also be used for non-calibrated hoses
- Suitable for vacuum operation

Working pressure:	Max. 16 bar
Operating temperature:	-20 °C to +80 °C
Material:	Nickel-plated brass
Sleeve:	Hostaform
Clamping ring:	Stainless steel
O-ring:	NBR

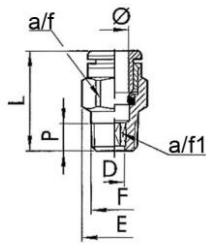
⇒ Note: The above reducers, plugs and extensions are not suitable for the 758 Series of double banjo fittings or the 759, 760 and 761 Series of multiple unions.



745.014-8

**Male connectors**, parallel male thread with O-ring and outer hex (M-thread without outer hex)

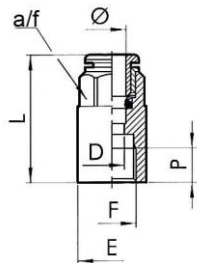
Type No.	Art. No.	Ø mm	F mm	a/f mm	IS mm	P mm	L mm	D mm	E mm
745.003-3	108547	3	M3	Ø 5.8	1.5	3.0	12.6	1.5	5.8
745.005-3	108548	3	M5	Ø 5.8	2	3.5	13.0	2.0	5.8
745.005-4	108549	4	M5	Ø 9	2.5	4.0	20.3	2.6	9.0
745.005-5	108550	5	M5	Ø 12	2.5	4.0	22.5	2.6	12.0
745.005-6	108551	6	M5	Ø 11	2.5	4.0	21.9	2.6	11.0
745.007-4	108552	4	M7	Ø 9	3	4.0	18.9	3.1	9.8
745.007-6	108553	6	M7	Ø 11	4	5.0	23.0	4.1	11.0
745.018-4	108554	4	G 1/8	10	3	6.0	18.0	3.1	14.0
745.018-5	108555	5	G 1/8	13	3	6.0	22.0	3.1	15.0
745.018-6	108556	6	G 1/8	12	4	6.0	21.6	4.1	14.0
745.018-8	108557	8	G 1/8	13	5	6.0	25.4	5.2	14.0
745.014-4	108558	4	G 1/4	10	3	8.0	19.8	3.1	18.0
745.014-5	108559	5	G 1/4	12	3	8.0	24.0	3.1	18.0
745.014-6	108560	6	G 1/4	12	4	8.0	20.3	4.1	18.0
745.014-8	108561	8	G 1/4	14	6	8.0	24.4	6.2	18.0
745.014-10	108562	10	G 1/4	16	7	8.0	29.2	7.2	18.0
745.014-12	108563	12	G 1/4	19	7	8.0	30.5	7.2	21.0
745.038-8	108564	8	G 3/8	14	6	9.0	22.8	6.2	22.0
745.038-10	108565	10	G 3/8	16	8	9.0	26.5	8.2	22.0
745.038-12	108566	12	G 3/8	19	10	9.0	28.1	10.2	22.0
745.038-14	108567	14	G 3/8	22	10	9.0	33.8	10.2	24.6
745.012-10	108568	10	G 1/2	16	8	11.0	29.8	8.2	26.0
745.012-12	108569	12	G 1/2	19	10	11.0	29.3	10.2	26.0
745.012-14	108570	14	G 1/2	22	12	11.0	31.5	12.2	26.0



744.018-6

**Male connectors, conical male thread with outer hex**

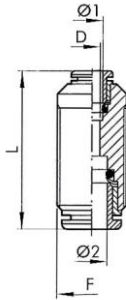
Type No.	Art. No.	Ø mm	F mm	a/f mm	a/f1 mm	D mm	E mm	L mm	P mm
744.018-4	108584	4	R 1/8	10	3	3.1	11.3	18.5	6.2
744.018-6	108585	6	R 1/8	12	4	4.1	13.5	22.5	6.2
744.018-8	108586	8	R 1/8	13	5	5.2	14.3	26.0	6.2
744.014-6	108587	6	R 1/4	12	4	4.1	13.2	22.3	8.5
744.014-8	108588	8	R 1/4	14	6	6.2	15.8	25.5	8.5
744.014-10	108589	10	R 1/4	16	7	7.2	17.7	28.9	8.5
744.038-8	108590	8	R 3/8	14	6	6.2	16.6	24.9	9.0
744.038-10	108591	10	R 3/8	16	7	7.2	17.7	28.9	9.0
744.038-12	108592	12	R 3/8	19	10	10.2	21.0	27.0	9.0
744.012-12	108593	12	R 1/2	19	10	10.2	21.3	26.6	11.0



746.018-6

**Male connectors, parallel female thread with outer hex**

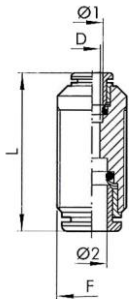
Type No.	Art. No.	Ø mm	F mm	a/f mm	P mm	L mm	D mm	E mm
746.005-3	108571	3	M5	7	4.5	15.7	2.5	7.8
746.018-4	108572	4	G 1/8	10	7.0	26.2	3.0	14.0
746.018-5	108573	5	G 1/8	12	7.0	27.5	4.0	14.0
746.018-6	108574	6	G 1/8	12	7.0	27.1	5.0	14.0
746.018-8	108575	8	G 1/8	13	7.0	28.1	7.0	14.0
746.014-4	108576	4	G 1/4	10	8.0	28.6	3.0	17.0
746.014-5	108577	5	G 1/4	12	8.0	29.5	4.0	17.0
746.014-6	108578	6	G 1/4	12	8.0	29.3	5.0	17.0
746.014-8	108579	8	G 1/4	14	8.0	30.0	7.0	17.0
746.014-10	108580	10	G 1/4	16	8.0	31.8	8.0	17.7
746.038-10	108581	10	G 3/8	16	10.0	36.8	8.0	20.8
746.038-12	108582	12	G 3/8	19	10.0	37.0	10.0	20.8
746.012-12	108583	12	G 1/2	19	11.0	40.5	10.0	23.8



747.008

## Unions

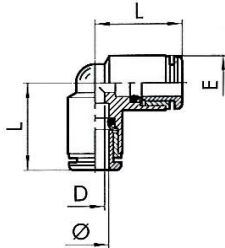
Type No.	Art. No.	Ø1 mm	Ø2 mm	F mm	L mm	D mm
747.003-3	108720	3	3	M8x0.75	18.4	2.0
747.004	108721	4	4	M11x1.0	30.6	2.5
747.005	108722	5	5	M14x1.0	33.5	4.0
747.006	108723	6	6	M13x1.0	33.0	4.5
747.008	108724	8	8	M15x1.0	35.7	6.5
747.010	108725	10	10	M17x1.0	39.2	8.0
747.012	108726	12	12	M20x1.0	39.7	10.0
747.014	108727	14	14	M24x1.0	45.9	12.0



747.0608

## Reducers

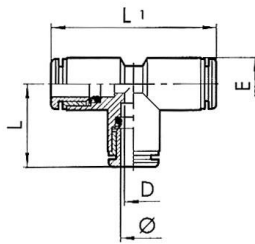
Type No.	Art. No.	Ø1 mm	Ø2 mm	F mm	L mm	D mm
747.0406	108728	4	6	M13x10	32.7	2.5
747.0408	108729	4	8	M15x1.0	34.4	2.5
747.0608	108730	6	8	M15x1.0	35.0	4.5
747.0610	108731	6	10	M17x1.0	37.5	4.5
747.0612	108732	6	12	M20x1.0	39.0	4.5
747.0810	108733	8	10	M17x1.0	37.8	6.5
747.0812	108734	8	12	M20x1.0	40.1	6.0
747.1012	108735	10	12	M20x1.0	40.8	8.0



748.006

**Union elbows**

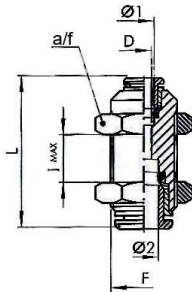
Type No.	Art. No.	Ø mm	L mm	D mm	E mm
748.003	108752	3	10.4	2.0	6.3
748.004	108753	4	16.7	2.5	10.0
748.005	108754	5	19.2	3.0	13.5
748.006	108755	6	19.0	4.5	11.5
748.008	108756	8	21.3	6.5	13.5
748.010	108757	10	23.3	8.0	15.5
748.012	108758	12	26.0	10.0	20.5
748.014	108759	14	29.3	12.0	22.0



749.006

**Union tees**

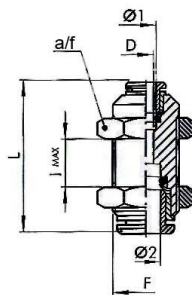
Type No.	Art. No.	Ø mm	L mm	L1 mm	D mm	E mm
749.003	108760	3	10.4	21.2	2.0	6.3
749.004	108761	4	16.7	33.4	2.5	10.0
749.005	108762	5	19.2	33.4	3.0	13.5
749.006	108763	6	19.0	38.0	4.5	11.5
749.008	108764	8	21.3	42.6	6.5	13.5
749.010	108765	10	23.3	46.6	8.0	15.5
749.012	108766	12	26.0	52.0	10.0	20.5
749.014	108767	14	29.3	58.6	12.0	22.0



751.016-8

### Female bulkhead connectors

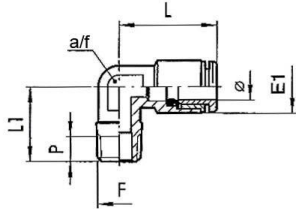
Type No	Art. No.	Ø1 mm	Ø2 mm	F mm	a/f mm	L mm	D mm	l max mm
751.008-3	108736	3	3	M8x0.75	10	18.9	2.0	5.0
751.012-4	108737	4	4	M11x1.0	13	30.6	2.5	11.0
751.014-5	108738	5	5	M14x1.0	17	33.5	4.0	8.0
751.014-6	108739	6	6	M13x1.0	16	33.0	4.5	12.0
751.016-8	108740	8	8	M15x1.0	17	35.7	6.5	13.5
751.020-10	108741	10	10	M17x1.0	20	39.2	8.0	17.0
751.022-12	108742	12	12	M20x1.0	24	40.7	10.0	20.3
751.024-14	108743	14	14	M24x1.0	27	45.9	12.0	21.9



751.015-68

### Female bulkhead connectors, unequal

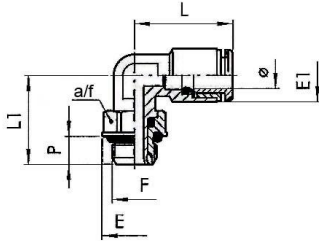
Type No	Art. No.	Ø1 mm	Ø2 mm	F mm	a/f mm	L mm	D mm	l max mm
751.013-46	108744	4	6	M13x1.0	16	32.7	2.5	11.0
751.015-48	108745	4	8	M15x1.0	17	34.4	2.5	12.0
751.015-68	108746	6	8	M15x1.0	17	35.0	4.5	13.0
751.017-610	108747	6	10	M17x1.0	20	37.5	4.5	14.5
751.017-810	108748	8	10	M17x1.0	20	37.8	6.5	15.0
751.020-612	108749	6	12	M20x1.0	24	39.0	4.5	16.0
751.020-812	108750	8	12	M20x1.0	24	40.1	6.0	18.5
751.020-1012	108751	10	12	M20x1.0	24	40.8	8.0	19.0



752.018-6

**Male elbows, conical male thread**

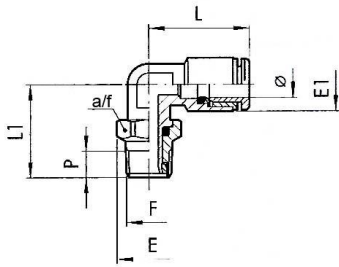
Type No.	Art. No.	Ø mm	F mm	a/f mm	E1 mm	L mm	L1 mm	P mm
752.018-4	108624	4	R 1/8	10	9.5	18.6	16.0	6.2
752.018-6	108625	6	R 1/8	10	11.8	21.9	16.0	6.2
752.018-8	108626	8	R 1/8	10	13.5	25.4	16.0	6.2
752.014-6	108627	6	R 1/4	10	11.8	21.9	18.5	8.5
752.014-8	108628	8	R 1/4	10	13.5	25.4	18.5	8.5
752.014-10	108629	10	R 1/4	14	16.0	27.2	22.0	8.5



754.018-6

**Male elbows, swivel type, parallel male thread with O-ring**

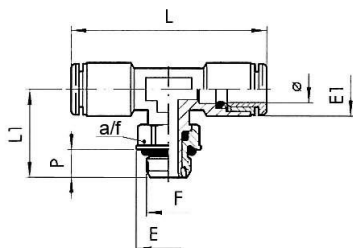
Type No.	Art. No.	Ø mm	F mm	a/f mm	E mm	E1 mm	L mm	L1 mm	P mm
754.005-4	108594	4	M5	9	9.9	9.5	18.6	15.3	4.0
754.005-5	108595	5	M5	9	9.9	11.5	22.8	15.3	4.0
754.005-6	108596	6	M5	9	9.9	11.8	21.9	15.3	4.0
754.018-4	108597	4	G 1/8	12	14.0	9.5	18.6	19.1	6.0
754.018-5	108598	5	G 1/8	12	15.0	11.5	22.8	19.1	6.0
754.018-6	108599	6	G 1/8	12	14.0	11.8	21.9	19.1	6.0
754.018-8	108600	8	G 1/8	12	14.0	13.5	25.4	19.1	6.0
754.014-4	108601	4	G 1/4	14	18.0	9.5	18.6	21.1	8.0
754.014-5	108602	5	G 1/4	14	18.0	13.5	22.8	21.8	8.0
754.014-6	108603	6	G 1/4	14	18.0	11.8	21.9	21.1	8.0
754.014-8	108604	8	G 1/4	14	18.0	13.5	25.4	21.1	8.0
754.014-10	108605	10	G 1/4	14	18.0	16.0	27.2	24.8	8.0
754.014-12	108606	12	G 1/4	14	18.0	20.0	30.0	25.6	8.0
754.038-8	108607	8	G 3/8	17	22.0	13.8	23.6	27.1	9.0
754.038-10	108608	10	G 3/8	17	22.0	16.0	27.2	27.1	9.0
754.038-12	108609	12	G 3/8	17	22.0	20.0	30.0	27.1	9.0
754.012-10	108610	10	G 1/2	22	26.0	16.0	27.2	30.7	11.0
754.012-12	108611	12	G 1/2	22	26.0	20.0	30.0	30.7	11.0
754.012-14	108612	14	G 1/2	22	26.0	21.3	33.0	32.3	11.0



7754.018-6

**Male elbows, swivel type, conical male thread**

Type No.	Art. No.	Ø mm	F mm	a/f mm	E mm	E1 mm	L mm	L1 mm	P mm
7754.018-4	108613	4	R 1/8	12	13.3	9.5	18.6	19.8	6.2
7754.018-6	108614	6	R 1/8	12	13.3	11.8	21.9	19.8	6.2
7754.018-8	108615	8	R 1/8	12	13.3	13.5	25.4	19.8	6.2
7754.014-4	108616	4	R 1/4	14	15.4	9.5	18.6	22.6	8.5
7754.014-6	108617	6	R 1/4	14	15.4	11.8	21.9	22.6	8.5
7754.014-8	108618	8	R 1/4	14	15.4	13.5	25.4	23.6	8.5
7754.014-10	108619	10	R 1/4	14	15.4	16.0	27.2	26.3	8.5
7754.038-8	108620	8	R 3/8	17	19.2	13.8	23.6	27.1	9.0
7754.038-10	108621	10	R 3/8	17	19.2	16.0	27.2	27.1	9.0
7754.038-12	108622	12	R 3/8	17	19.2	20.0	30.0	27.1	9.0
7754.012-12	108623	12	R 1/2	22	24.6	20.0	30.0	31.9	11.0

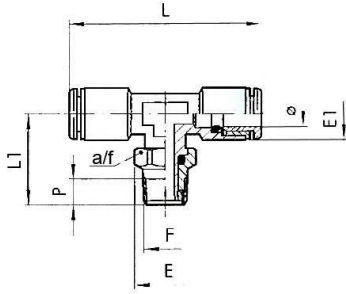


755.018-6

**Male branch tees, swivel type, parallel male thread with O-ring**

Type No.	Art. No.	Ø mm	F mm	a/f mm	E mm	E1 mm	L mm	L1 mm	P mm
755.005-4	108649	4	M5	9	8.0	9.5	37.2	15.3	4.0
755.005-6	108650	6	M5	9	8.0	11.5	43.8	15.3	4.0
755.018-4	108651	4	G 1/8	12	14.0	9.5	37.2	19.1	6.0
755.018-5	108652	5	G 1/8	12	15.2	11.5	44.6	19.1	6.0
755.018-6	108653	6	G 1/8	12	14.0	11.8	43.8	19.1	6.0
755.018-8	108654	8	G 1/8	12	15.2	13.5	50.8	19.1	6.0
755.014-4	108655	4	G 1/4	14	18.0	9.5	37.2	21.1	8.0
755.014-6	108656	6	G 1/4	14	18.0	11.8	43.8	21.1	8.0
755.014-8	108657	8	G 1/4	14	18.0	13.5	50.8	21.1	8.0
755.014-10	108658	10	G 1/4	14	18.0	16.0	54.4	21.8	8.0
755.038-8	108659	8	G 3/8	17	22.0	13.8	47.2	27.1	9.0
755.038-10	108660	10	G 3/8	17	22.0	16.0	54.4	27.1	9.0
755.038-12	108661	12	G 3/8	17	22.0	20.0	59.0	27.1	9.0
755.012-12	108662	12	G 1/2	22	26.0	20.0	59.0	30.7	11.0
755.012-14	108663	14	G 1/2	22	26.0	21.3	66.0	32.3	11.0

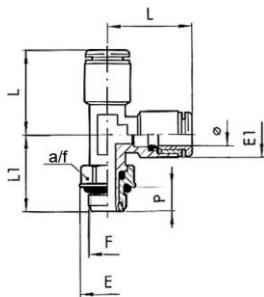




7755.018-6

**Male branch tees, swivel type, parallel male thread**

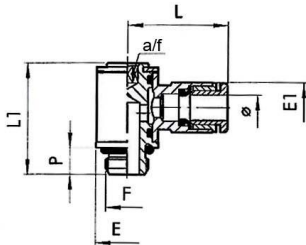
Type No.	Art. No.	Ø mm	F mm	a/f mm	E mm	E1 mm	L mm	L1 mm	P mm
7755.018-4	108664	4	R 1/8	12	13.3	9.5	37.2	19.8	6.2
7755.018-6	108665	6	R 1/8	12	13.3	11.8	43.8	19.8	6.2
7755.018-8	108666	8	R 1/8	12	13.3	13.5	50.8	19.8	6.2
7755.014-4	108667	4	R 1/4	14	15.4	9.5	37.2	22.6	8.5
7755.014-6	108668	6	R 1/4	14	15.4	11.8	43.8	22.6	8.5
7755.014-8	108669	8	R 1/4	14	15.4	13.5	50.8	23.6	8.5
7755.014-10	108670	10	R 1/4	14	15.4	16.0	54.4	26.3	8.5
7755.038-8	108671	8	R 3/8	17	19.2	13.8	47.2	27.1	9.0
7755.038-10	108672	10	R 3/8	17	19.2	16.0	54.4	27.1	9.0



738.038-12

**Male branch tees, angled plug connections, swivel type, parallel male thread with O-ring**

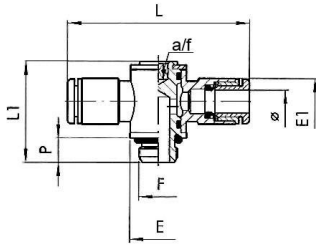
Type No.	Art. No.	Ø mm	F mm	a/f mm	E mm	E1 mm	L mm	L1 mm	P mm
738.018-4	108690	4	G 1/8	12	14.0	9.5	18.6	19.1	6.0
738.018-6	108691	6	G 1/8	12	14.0	11.5	21.9	19.1	6.0
738.018-8	108692	8	G 1/8	12	14.0	13.5	25.4	19.1	6.0
738.014-6	108693	6	G 1/4	14	18.0	11.5	21.9	21.1	8.0
738.014-8	108694	8	G 1/4	14	18.0	13.5	25.4	22.1	8.0
738.014-10	108695	10	G 1/4	14	18.0	16.0	27.2	21.8	8.0
738.038-10	108696	10	G 3/8	17	22.0	16.0	27.2	27.1	9.0
738.038-12	108697	12	G 3/8	17	22.0	20.0	30.0	27.1	9.0
738.012-12	108698	12	G 1/2	22	26.0	20.0	30.0	30.7	11.0



756.018-6

**Banjo elbows with inner hex, swivel type, parallel male thread with O-ring**

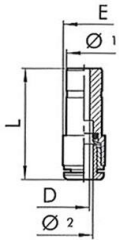
Type No.	Art. No.	Ø mm	F mm	a/f mm	P mm	L mm	L1 mm	E mm	E1 mm
756.003-3	108630	3	M3	2	3.0	12.2	13.2	5.8	5.8
756.005-3	108631	3	M5	2	3.5	12.7	13.7	5.8	5.8
756.005-4	108632	4	M5	2	4.0	20.2	18.4	9.5	9.5
756.005-5	108633	5	M5	2	4.0	24.0	19.0	9.9	12.0
756.005-6	108634	6	M5	2	4.0	23.5	18.4	9.5	11.3
756.007-4	108635	4	M7	3	5.0	20.2	18.5	9.8	9.5
756.007-6	108636	6	M7	3	5.0	23.5	18.5	9.8	11.3
756.018-4	108637	4	G 1/8	3	6.0	21.3	24.9	14.0	9.5
756.018-5	108638	5	G 1/8	3	6.0	24.8	26.2	14.0	12.0
756.018-6	108639	6	G 1/8	3	6.0	23.0	24.9	14.0	11.5
756.018-8	108640	8	G 1/8	3	6.0	24.8	24.9	14.0	13.8
756.014-6	108641	6	G 1/4	4	8.0	24.5	29.4	18.0	11.5
756.014-8	108642	8	G 1/4	4	8.0	26.5	29.4	18.0	13.8
756.014-10	108643	10	G 1/4	4	8.0	31.4	29.4	18.0	16.5
756.014-12	108644	12	G 1/4	4	8.0	33.0	29.4	18.0	19.5
756.038-8	108645	8	G 3/8	5	9.0	28.5	35.6	22.0	13.8
756.038-10	108646	10	G 3/8	5	9.0	32.8	35.6	22.0	15.5
756.038-12	108647	12	G 3/8	5	9.0	35.3	35.6	22.0	19.5
756.012-12	108648	12	G 1/2	8	11.0	37.0	40.8	26.0	19.5



758.018-4 M

**Male branch tees with inner hex, swivel type, parallel male thread with O-ring**

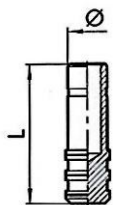
Type No.	Art. No.	Ø mm	F mm	a/f mm	P mm	L mm	L1 mm	E mm	E1 mm
758.005-4 M	108673	4	M5	2	4.0	40.4	18.4	9.5	9.5
758.005-5 M	108674	5	M5	2	4.0	47.6	18.8	9.9	12.0
758.005-6 M	108675	6	M5	2	4.0	47.0	18.4	9.5	11.3
758.007-4 M	108676	4	M7	3	5.0	40.4	18.5	9.8	9.5
758.007-6 M	108677	6	M7	3	5.0	47.0	18.5	9.8	11.3
758.018-4 M	108678	4	G 1/8	3	6.0	42.6	24.9	14.0	9.5
758.018-5 M	108679	5	G 1/8	3	6.0	49.5	27.0	14.0	13.5
758.018-6 M	108680	6	G 1/8	3	6.0	46.0	24.9	14.0	11.5
758.018-8 M	108681	8	G 1/8	3	6.0	49.6	24.9	14.0	13.8
758.014-6 M	108682	6	G 1/4	4	8.0	49.0	29.4	18.0	11.5
758.014-8 M	108683	8	G 1/4	4	8.0	53.0	29.4	18.0	13.8
758.014-10 M	108684	10	G 1/4	4	8.0	62.8	29.4	18.0	16.5
758.014-12 M	108685	12	G 1/4	4	8.0	66.0	29.4	18.0	19.5
758.038-8 M	108686	8	G 3/8	5	9.0	57.0	35.6	22.0	13.8
758.038-10 M	108687	10	G 3/8	5	9.0	65.6	35.6	22.0	15.5
758.038-12 M	108688	12	G 3/8	5	9.0	69.6	35.6	22.0	19.5
758.012-12 M	108689	12	G 1/2	8	11.0	73.0	40.8	26.0	19.5



757.0604

**Reducers with push-in plug**

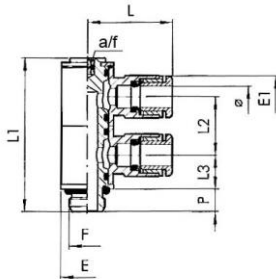
Type No.	Art. No.	Ø 1 mm	Ø 2 mm	L mm	D mm	E mm
757.0403	108771	4	3	26.0	2.0	6.3
757.0604	108772	6	4	29.9	2.8	9.5
757.0605	108773	6	5	36.0	4.0	12.0
757.0804	108774	8	4	28.7	2.8	9.5
757.0805	108775	8	5	34.5	4.0	12.0
757.0806	108776	8	6	31.9	4.5	11.5
757.1006	108777	10	6	36.2	5.0	11.5
757.1008	108778	10	8	40.8	7.0	14.0
757.1208	108779	12	8	40.1	7.0	15.5
757.1210	108780	12	10	44.3	8.2	16.0
757.1410	108781	14	10	44.3	8.2	16.0
757.1412	108782	14	12	50.0	10.0	19.5



758.006

**Push-in plug**

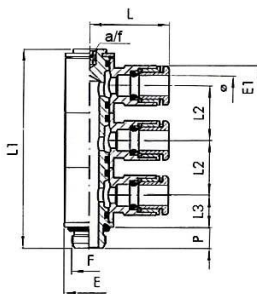
Type No.	Art. No.	Ø mm	L mm
758.003	108790	3	20.0
758.004	108791	4	27.0
758.005	108792	5	27.0
758.006	108793	6	29.8
758.008	108794	8	33.6
758.010	108795	10	36.8
758.012	108796	12	39.0
758.014	108797	14	39.5



759.018-4 M

**Multiple union elbows with inner hex, 2 outlets, swivel type, parallel male thread with O-ring**

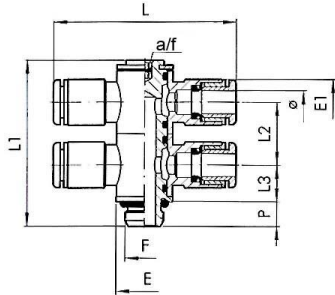
Type No.	Art. No.	Ø mm	F mm	SW mm	E mm	E1 mm	L mm	L1 mm	L2 mm	L3 mm	P mm
759.005-4 M	108798	4	M5	2	9.5	9.5	20.2	30.3	11.5	6.8	4.0
759.005-6 M	108799	6	M5	2	9.5	11.3	23.5	30.3	11.5	6.8	4.0
759.018-4 M	108800	4	G 1/8	3	14.0	9.0	20.2	40.9	15.5	9.1	6.0
759.018-5 M	108801	5	G 1/8	5	14.0	9.0	20.2	40.9	15.5	9.1	6.0
759.018-6 M	108802	6	G 1/8	3	14.0	11.3	23.5	40.9	15.5	9.1	6.0
759.018-8 M	108803	8	G 1/8	3	14.0	13.8	24.8	40.9	15.5	9.1	6.0
759.014-6 M	108804	6	G 1/4	4	18.0	11.5	23.0	47.0	17.2	10.2	8.0
759.014-8 M	108805	8	G 1/4	4	18.0	13.8	26.5	47.0	17.2	10.2	8.0
759.014-10 M	108806	10	G 1/4	4	18.0	16.5	31.4	47.0	17.2	10.2	8.0



760.018-4 M

**Multiple union elbows with inner hex, 3 outlets, swivel type, parallel male thread with O-ring**

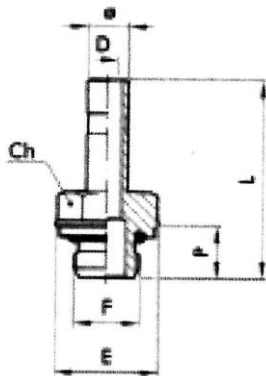
Type No.	Art. No.	Ø mm	F mm	SW mm	E mm	E1 mm	L mm	L1 mm	L2 mm	L3 mm	P mm
760.018-4 M	108807	4	G 1/8	3	14.0	9.5	20.2	56.7	15.5	9.1	6.0
760.018-6 M	108808	6	G 1/8	3	14.0	11.5	23.5	56.7	15.5	9.1	6.0
760.018-8 M	108809	8	G 1/8	3	14.0	13.8	24.8	56.7	15.5	9.1	6.0
760.014-6 M	108810	6	G 1/4	4	18.0	11.5	25.6	64.3	17.2	10.2	8.0
760.014-8 M	108811	8	G 1/4	4	18.0	13.8	26.5	64.3	17.2	10.2	8.0
760.014-10 M	108812	10	G 1/4	4	18.0	16.5	31.4	64.3	17.2	10.2	8.0



761.018-4 M

Multiple union elbows with inner hex, 4 outlets, swivel type, parallel male thread with O-ring

Type No.	Art. No.	Ø mm	F mm	SW mm	E mm	E1 mm	L mm	L1 mm	L2 mm	L3 mm	P mm
761.005-4 M	108813	4	M5	2	9.5	9.5	40.4	29.9	11.5	6.8	4.0
761.005-6 M	108814	6	M5	2	9.5	11.3	47.0	29.9	11.5	6.8	4.0
761.018-4 M	108815	4	G 1/8	3	14.0	9.5	40.4	40.9	15.5	9.1	6.0
761.018-6 M	108816	6	G 1/8	3	14.0	11.3	46.0	41.1	15.5	9.1	6.0
761.018-8 M	108817	8	G 1/8	3	14.0	13.8	49.6	41.1	15.5	9.1	6.0
761.014-6 M	108818	6	G 1/4	4	18.0	11.3	49.0	47.0	17.2	10.2	8.0
761.014-8 M	108818	8	G 1/4	4	18.0	13.8	53.0	47.0	17.2	10.2	8.0
761.014-10 M	108819	10	G 1/4	4	18.0	16.5	62.8	47.0	17.2	10.2	8.0

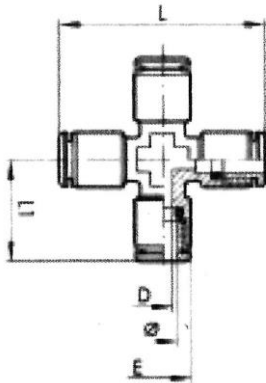


768.014-6

**Push-in plug**, parallel male thread with O-ring

By combining these parts with unions, union elbows and union tees, you can obtain all essential connecting variants and simultaneously reduce your warehousing costs.

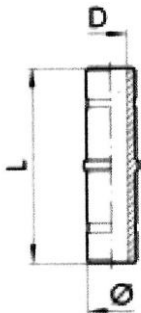
Type No.	Art. No.	Ø mm	F mm	SW mm	P mm	L mm	D mm	E mm
768.005-3	108699	3	M5	5	3.5	16.8	2.0	5.8
768.005-4	108700	4	M5	8	4.0	25.2	2.5	9.0
768.005-5	108701	5	M5	8	4.0	25.2	2.3	9.0
768.005-6	108702	6	M5	9	4.0	25.7	2.7	10.0
768.018-4	108703	4	G 1/8	13	6.0	28.9	2.5	14.8
768.018-5	108704	5	G 1/8	13	6.0	28.9	3.0	14.8
768.018-6	108705	6	G 1/8	13	6.0	29.4	4.0	14.8
768.018-8	108706	8	G 1/8	13	6.0	30.6	5.5	14.8
768.014-4	108707	4	G 1/4	14	8.0	32.4	2.2	17.7
768.014-5	108708	5	G 1/4	14	8.0	32.4	3.0	17.7
768.014-6	108709	6	G 1/4	14	8.0	32.9	4.0	17.7
768.014-8	108710	8	G 1/4	14	8.0	34.0	6.0	17.7
768.014-10	108711	10	G 1/4	14	8.0	37.2	7.8	17.7
768.014-12	108712	12	G 1/4	14	8.0	40.7	7.8	17.7
768.038-8	108713	8	G 3/8	17	9.0	35.4	6.0	21.7
768.038-10	108714	10	G 3/8	17	9.0	37.1	8.0	21.7
768.038-12	108715	12	G 3/8	17	9.0	42.2	10.0	21.7
768.038-14	108716	14	G 3/8	17	9.0	46.2	10.0	21.7
768.012-10	108717	10	G 1/2	19	11.0	41.0	8.0	25.7
768.012-12	108718	12	G 1/2	22	11.0	44.2	10.0	25.7
768.012-14	108719	14	G 1/2	22	11.0	48.2	12.0	25.7



767.006

**X-unions**

Type No.	Art. No.	Ø mm	D mm	E mm	L mm	L1 mm
767.004	108768	4	3.0	9.5	37.2	18.6
767.006	108769	6	4.5	11.5	43.8	21.9
767.008	108770	8	6.5	14.0	50.8	25.4



769.006

**Push-in plug**

Type No.	Art. No.	Ø mm	L mm	D mm
769.004	108783	4	34.0	2.0
769.005	108784	5	34.0	3.0
769.006	108785	6	37.5	4.0
769.008	108786	8	37.5	6.0
769.010	108787	10	45.0	8.0
769.012	108788	12	48.0	10.0
769.014	108789	14	58.0	12.0



### Boxed set push-in fittings

»click-clock« Series

Practical, high-quality assortment of the most popular parts in our »click-clock« series of push-in fittings, manufactured in nickel-plated brass and packaged in a sturdy plastic case.

Total of 30 different small part types, conveniently arranged in 24 plastic compartments. The inserts can be removed and rearranged inside the case according to individual needs. All inserts are labelled with the article numbers of the parts they contain.

Parts included:

- 45 male connectors G 1/8-4 • G 1/8-6 • G 1/4-8 • G 3/8-8
- 35 swivel type male elbows G 1/8-4 • G 1/8-6 • G 1/4-6 • G 1/4-8 • G 3/8-8
- 15 unions 4, 6, 8 mm
- 10 union elbows 6, 8 mm
- 15 union tees 4, 6, 8 mm
- 15 swivel type male branch tees G 1/8-6 • G 1/4-6 • G 1/4-8
- 9 reducers with push-in plug 8/6 • 10/6 • 10/8
- 10 plugs 6, 8 mm
- 10 sockets G 1/8 • G 1/4 • G 3/8
- 1 PTFE sealing tape
- 1 hose cutter

Type No.	Art. No.
PIB 200	108821

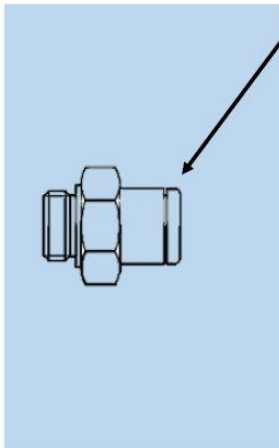


PIB 200

**Assembling instructions for push-in fittings**

- Cut the hose ends plain. To ensure an ideal sealing effect and secure stop of the fitting make sure the hose end is not oval.
- Clean the hose ends and make sure that it is free of burrs.
- Push the hose ends into the fitting till it stops.
- Test stability by pulling the hose shortly.
- Push the release ring to release the hose.
- Pull out the hose with slight rotation.
- For a new assembling cut the hose plain again. Then pushing and releasing the tube should not be affected adversely.

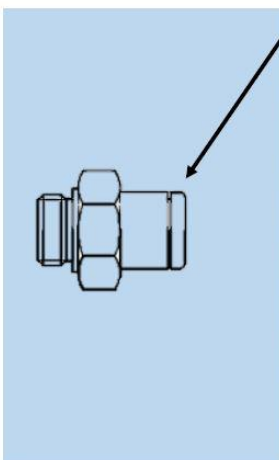
We recommend for improved strength of push-in fittings with **PA** hoses, the following push-in fitting - hose combination:



For tube O.D.	Recommended hose $\varnothing$	Recommended hose
3	3x1.5 *	259.08 X
4	4x2 *	259.09 X
5	5x3	259.10 X
6	6x4 *	259.11 X
8	8x6 *	259.12 X
10	10x7 *	259.61 X
12	12x9 *	259.14 X
14	14x11	259.62 X
16	16x12	259.25 X

\* Recommended and based on ISO 14743

We recommend for improved strength of push-in fittings with **PU** hoses, the following push-in fitting - hose combination:



For tube O.D.	Recommended hose $\varnothing$	Recommended hose
3	3x1.5 *	259.50 X
4	4x2 *	259.04 X
5	5x3	259.15 X
6	6x4 *	259.16 X
8	8x5 *	259.63 X
10	10x7 *	259.64 X
12	12x8 *	259.65 X
14	14x10	259.51 X
16	16x12	259.52 X

\* Recommended and based on ISO 14743