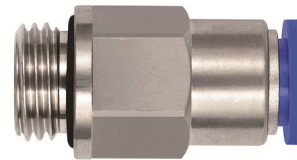
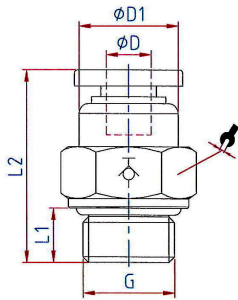
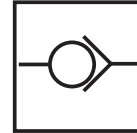


The air supply is completely shut off as soon as the hose is disconnected from the union.
The flow rate is only guaranteed if the hose is securely inserted.

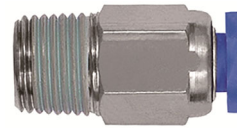
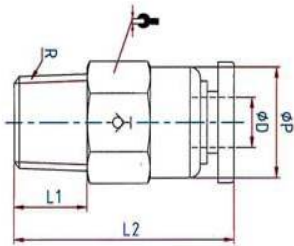
Applications	Air, vacuum
Material	Plastic and nickel-plated brass
Max. working pressure	10 bar
Temperature range	0 °C to 60 °C
Medium	Compressed air
Recommended hose	PU or PA (Nylon)



195.148-1

Straight stop valve, parallel male thread with O-ring (NBR)

Art. No.	Type No.	Thread	For tube O.D. mm	L1 mm	L2 mm	a/f mm	Ø D1 mm	Sleeve	Standard thread
151340	195.148-1	G 1/4	8	6.5	31.9	15	14	Plastic blue	DIN EN ISO 228-1
Art. No. 151340 = discontinued product. No longer available. New product 151443 (195.148-2)									
151341	195.1410-1	G 1/4	10	6.5	34.9	17	17	Plastic blue	DIN EN ISO 228-1
151342	195.388-1	G 3/8	8	6.5	31.9	17	14	Plastic blue	DIN EN ISO 228-1
Art. No. 151342 = discontinued product. No longer available. New product 151445 (195.388-2)									

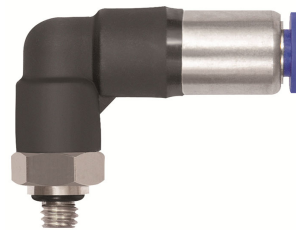
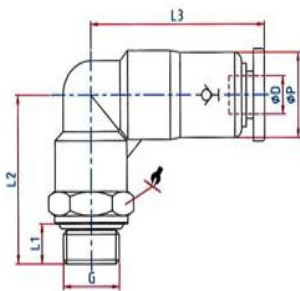


196.184-1

Image maybe different from the original part

Straight stop valve, conical male thread, coated

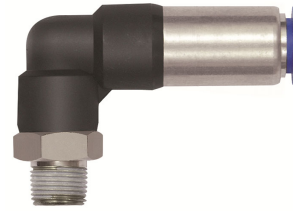
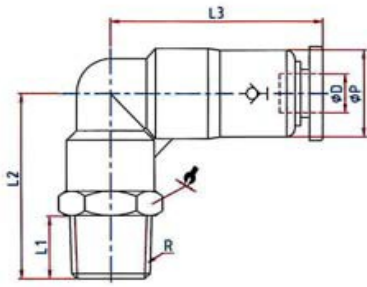
Art. No.	Type No.	Thread	For tube O.D. mm	L1 mm	L2 mm	a/f mm	Ø P mm	Sleeve	Standard thread
151343	196.184-1	R 1/8	4	8.0	26.1	10	10	Plastic blue	ISO 7-1



197.54-1

Angle stop valve, swivel type, parallel male thread with O-ring (NBR)

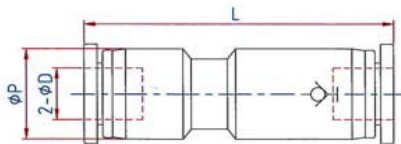
Art. No.	Type No.	Thread	For tube O.D. mm	L1 mm	L2 mm	L3 mm	a/f mm	Ø P mm	Sleeve	Standard thread
151344	197.54-1	M 5	4	4.0	20.5	29.5	10	10	Plastic blue	DIN 13-1
151345	197.186-1	G 1/8	6	5.0	23.5	32.8	14	12	Plastic blue	DIN EN ISO 228-1
151346	197.146-1	G 1/4	6	6.5	25.5	32.8	17	12	Plastic blue	DIN EN ISO 228-1



198.188-1

Angle top valve, swivel type, conical male thread, coated

Art. No.	Type No.	Thread	For tube O.D. mm	L1 mm	L2 mm	L3 mm	a/f mm	Ø P mm	Sleeve	Standard thread
151347	198.184-1	R 1/8	4	8.0	24.5	29.5	10	10	Plastic blue	ISO 7-1
151348	198.186-1	R 1/8	6	8.0	26.5	32.8	12	12	Plastic blue	ISO 7-1
Art. No. 151348 = discontinued product. No longer available. New product 151475 (198.186-2)										
151349	198.188-1	R 1/8	8	8.0	28.0	42.9	14	14	Plastic blue	ISO 7-1

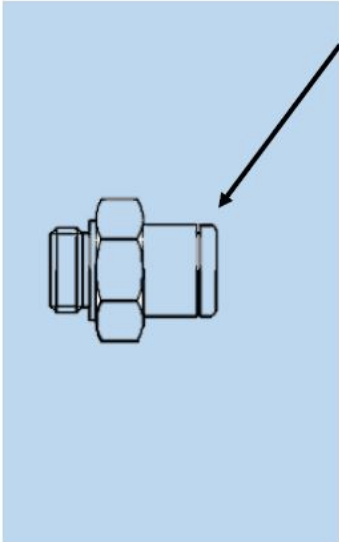


199.06-1

Stop union

Art. No.	Type No.	For tube O.D. mm	L2 mm	Ø P mm	Sleeve
151350	199.06-1	6	45.9	12.5	Plastic blue
Art. No. 151350 = discontinued product. No longer available. New product 151486 (199.06-2)					

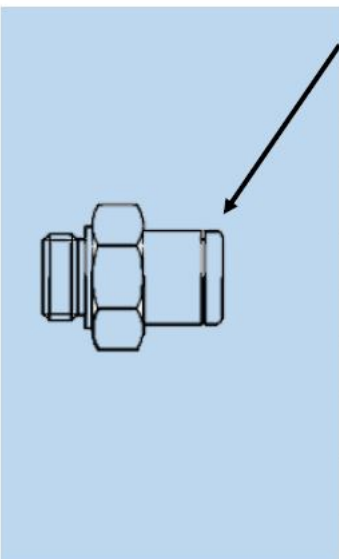
We recommend for improved strength of push-in fittings with **PA** hoses, the following push-in fitting - hose combination:



For tube O.D.	Recommended hose \varnothing	Recommended hose
3	3x1.5 *	259.08 X
4	4x2 *	259.09 X
5	5x3	259.10 X
6	6x4 *	259.11 X
8	8x6 *	259.12 X
10	10x7 *	259.61 X
12	12x9 *	259.14 X
14	14x11	259.62 X
16	16x12	259.25 X

* Recommended and based on ISO 14743

We recommend for improved strength of push-in fittings with **PU** hoses, the following push-in fitting - hose combination:



For tube O.D.	Recommended hose \varnothing	Recommended hose
3	3x1.5 *	259.50 X
4	4x2 *	259.04 X
5	5x3	259.15 X
6	6x4 *	259.16 X
8	8x5 *	259.63 X
10	10x7 *	259.64 X
12	12x8 *	259.65 X
14	14x10	259.51 X
16	16x12	259.52 X

* Recommended and based on ISO 14743