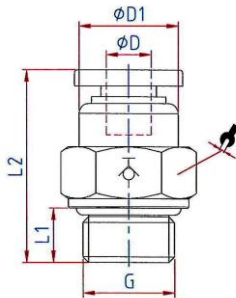
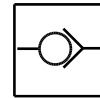


The air supply is completely shut off as soon as the hose is disconnected from the union.
The flow rate is only guaranteed if the hose is securely inserted.

Areas of application:	Air, vacuum
Material:	Plastic and nickel-plated brass
Sleeve:	Plastic
Working pressure:	Max. 10 bar
Temperature range:	0 °C to 60 °C
Sealing surface:	O-ring (NBR)
Port:	M thread acc. to DIN 13-1, with O-ring G thread acc. to DIN EN ISO 228-1, with O-ring R thread acc. to ISO 7-1, PTFE coated
Medium:	Compressed air
Recommended hose:	PU or PA (nylon)

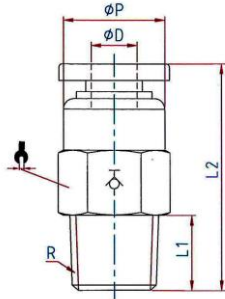


195.148

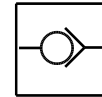


Straight stop valve, parallel male thread with O-ring (NBR)

Art. No.	Type No.	Ø D	G	Ø D1	L1	L2	a/f	Standard thread
110160	195.184	4	G 1/8	10.0	5.5	27.5	14	DIN EN ISO 228-1
110160 = discontinued product. No longer available. New product 151439 (195.184-2)								
110161	195.186	6	G 1/8	12.0	5.5	27.0	14	DIN EN ISO 228-1
110161 = discontinued product. No longer available. New product 151440 (195.186-2)								
110162	195.188	8	G 1/8	14.0	5.5	29.0	14	DIN EN ISO 228-1
110163	195.146	6	G 1/4	12.0	7.5	27.0	17	DIN EN ISO 228-1
110164	195.148	8	G 1/4	14.0	7.5	29.0	17	DIN EN ISO 228-1
110164 = discontinued product. No longer available. New product 151340 (195.148-1)								
110165	195.1410	10	G 1/4	17.0	7.5	37.0	17	DIN EN ISO 228-1
110165 = discontinued product. No longer available. New product 151341 (195.1410-1)								
110166	195.388	8	G 3/8	14.0	7.5	29.0	20	DIN EN ISO 228-1
110166 = discontinued product. No longer available. New product 151342 (195.388-1)								
110167	195.3810	10	G 3/8	17.0	7.5	37.0	20	DIN EN ISO 228-1
110167 = discontinued product. No longer available. New product 151446 (195.3810-2)								
110168	195.3812	12	G 3/8	20.0	7.5	38.0	21	DIN EN ISO 228-1
110168 = discontinued product. No longer available. New product 151447 (195.3812-2)								
110169	195.1210	10	G 1/2	17.0	10.0	37.0	24	DIN EN ISO 228-1
110170	195.1212	12	G 1/2	20.0	10.0	38.0	24	DIN EN ISO 228-1

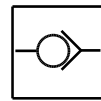
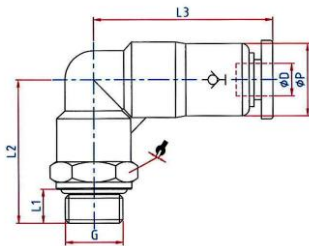


196.148



Straight stop valve, conical male thread, PTFE coated

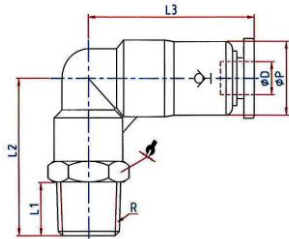
Art. No.	Type No.	Ø D	R	L1	L2	Ø P	a/f	Standard thread
110171	196.184	4	R 1/8	7.5	27.5	10.0	10	ISO 7-1
110171 = discontinued product. No longer available. New product 151343 (196.184-1)								
110172	196.186	6	R 1/8	7.5	27.0	12.0	12	ISO 7-1
110172 = discontinued product. No longer available. New product 151451 (196.186-2)								
110173	196.188	8	R 1/8	7.5	29.0	14.0	14	ISO 7-1
110174	196.146	6	R 1/4	9.5	27.0	12.0	14	ISO 7-1
110174 = discontinued product. No longer available. New product 151453 (196.146-2)								
110175	196.148	8	R 1/4	9.5	29.0	14.0	14	ISO 7-1
110175 = discontinued product. No longer available. New product 151454 (196.148-2)								
110176	196.1410	10	R 1/4	9.5	37.0	17.0	17	ISO 7-1
110176 = discontinued product. No longer available. New product 151455 (196.1410-2)								
110177	196.388	8	R 3/8	10.5	29.0	14.0	17	ISO 7-1
110178	196.3810	10	R 3/8	10.5	37.0	17.0	17	ISO 7-1
110178 = discontinued product. No longer available. New product 151457 (196.3810-2)								
110179	196.3812	12	R 3/8	10.5	38.0	20.0	20	ISO 7-1
110180	196.1210	10	R 1/2	13.5	37.0	17.0	21	ISO 7-1
110181	196.1212	12	R 1/2	13.5	38.0	20.0	21	ISO 7-1



197.56

Angle stop valve, swivel type, parallel male thread with O-ring (NBR)

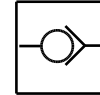
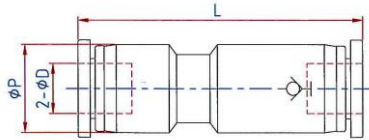
Art. No.	Type No.	Ø D	G	L1	L2	L3	Ø P	a/f	Standard thread
110182	197.54	4	M5	3.5	21.3	31.0	13.0	10	DIN 13-1
110182 = discontinued product. No longer available. New product 151344 (197.54-1)									
110183	197.56	6	M5	3.5	21.7	29.4	13.0	12	DIN 13-1
110184	197.184	4	G 1/8	5.5	24.3	31.0	13.0	14	DIN EN ISO 228-1
110185	197.186	6	G 1/8	5.5	24.2	29.4	13.0	14	DIN EN ISO 228-1
110185 = discontinued product. No longer available. New product 151345 (197.186-1)									
110186	197.188	8	G 1/8	5.5	27.0	33.0	14.5	14	DIN EN ISO 228-1
110187	197.146	6	G 1/4	7.5	26.7	29.4	13.0	17	DIN EN ISO 228-1
110187 = discontinued product. No longer available. New product 151346 (197.146-1)									
110188	197.148	8	G 1/4	7.5	29.5	33.0	14.5	17	DIN EN ISO 228-1
110189	197.1410	10	G 1/4	7.5	34.3	42.5	18.0	17	DIN EN ISO 228-1
110190	197.388	8	G 3/8	7.5	30.0	33.0	14.5	20	DIN EN ISO 228-1
110191	197.3810	10	G 3/8	7.5	34.3	42.5	18.0	20	DIN EN ISO 228-1
110192	197.3812	12	G 3/8	7.5	36.0	46.5	21.0	21	DIN EN ISO 228-1
110193	197.1210	10	G 1/2	10.0	37.8	42.5	18.0	24	DIN EN ISO 228-1
110194	197.1212	12	G 1/2	10.0	39.0	46.5	21.0	24	DIN EN ISO 228-1



198.146

Angle stop valve, swivel type, conical male thread, PTFE coated

Art. No.	Type No.	Ø D	R	L1	L2	L3	Ø P	a/f	Standard thread
110195	198.184	4	R 1/8	7.5	23.8	31.0	13.0	10	ISO 7-1
110195 = discontinued product. No longer available. New product 151347 (198.184-1)									
110196	198.186	6	R 1/8	7.5	24.2	29.4	13.0	12	ISO 7-1
110196 = discontinued product. No longer available. New product 151348 (198.186-1)									
110197	198.188	8	R 1/8	7.5	27.5	33.0	14.5	14	ISO 7-1
110197 = discontinued product. No longer available. New product 151349 (198.188)									
110198	198.146	6	R 1/4	9.5	26.7	29.4	13.0	14	ISO 7-1
110199	198.148	8	R 1/4	9.5	29.5	33.0	14.5	14	ISO 7-1
110200	198.1410	10	R 1/4	9.5	34.3	42.5	18.0	17	ISO 7-1
110201	198.388	8	R 3/8	10.5	31.0	33.0	14.5	17	ISO 7-1
110202	198.3810	10	R 3/8	10.5	35.3	42.5	18.0	17	ISO 7-1
110203	198.3812	12	R 3/8	10.5	37.0	46.5	21.0	21	ISO 7-1
110204	198.1210	10	R 1/2	13.5	38.8	42.5	18.0	21	ISO 7-1
110205	198.1212	12	R 1/2	13.5	40.0	46.5	21.0	21	ISO 7-1



199.06

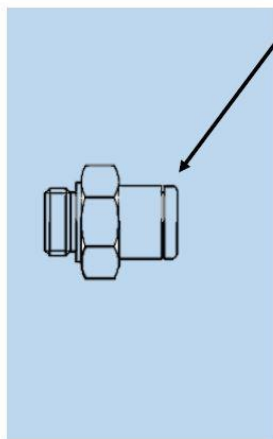
Stop union

Art. No.	Type No.	Ø D	Ø P	L
110206	199.04	4	13.0	47.0
110207	199.06	6	13.0	45.0
110207 = discontinued product. No longer available. New product 151350 (199.06-1)				
110208	199.08	8	15.0	49.5
110208 = discontinued product. No longer available. New product 151487 (199.08-2)				
110209	199.10	10	19.0	63.0
110210	199.12	12	21.5	66.5

Assembling instructions for push-in fittings

- Cut the hose ends plain. To ensure an ideal sealing effect and secure stop of the fitting make sure the hose end is not oval.
- Clean the hose ends and make sure that it is free of burrs.
- Push the hose ends into the fitting till it stops.
- Test stability by pulling the hose shortly.
- Push the release ring to release the hose.
- Pull out the hose with slight rotation.
- For a new assembling cut the hose plain again. Then pushing and releasing the tube should not be affected adversely.

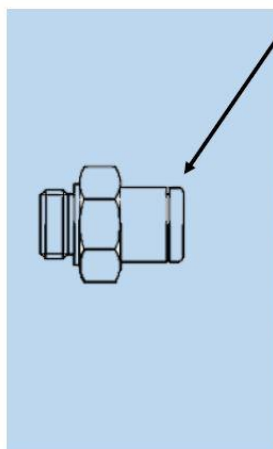
We recommend for improved strength of push-in fittings with **PA** hoses, the following push-in fitting - hose combination:



For tube O.D.	Recommended hose Ø	Recommended hose
3	3x1.5 *	259.08 X
4	4x2 *	259.09 X
5	5x3	259.10 X
6	6x4 *	259.11 X
8	8x6 *	259.12 X
10	10x7 *	259.61 X
12	12x9 *	259.14 X
14	14x11	259.62 X
16	16x12	259.25 X

* Recommended and based on ISO 14743

We recommend for improved strength of push-in fittings with **PU** hoses, the following push-in fitting - hose combination:



For tube O.D.	Recommended hose Ø	Recommended hose
3	3x1.5 *	259.50 X
4	4x2 *	259.04 X
5	5x3	259.15 X
6	6x4 *	259.16 X
8	8x5 *	259.63 X
10	10x7 *	259.64 X
12	12x8 *	259.65 X
14	14x10	259.51 X
16	16x12	259.52 X

* Recommended and based on ISO 14743