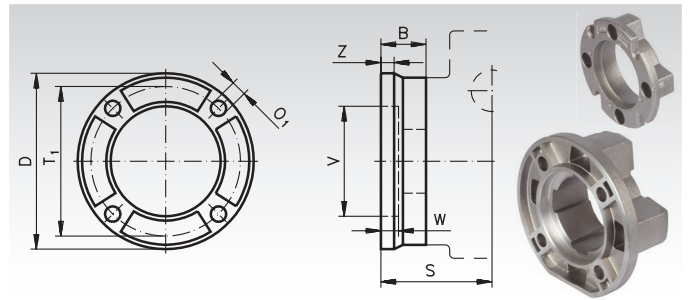


Accessories Worm Geared Motors HMD/I

Output-Side Flanges HMD/I

Material: Aluminium.

Retrofit kit: Flange B5 with mounting screws.



Ordering details: e.g.: Prod. No. 438 034 00, Output-Side Flange, Ø 80 mm

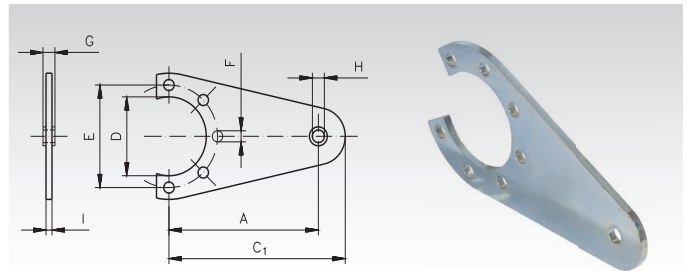
Product No.	Gearbox Size	D mm	B mm	O ₁ mm	S mm	T ₁ mm	V mm	W mm	Z mm	Screws Amount x Size	Weight kg
438 034 00	030	80	20,5	7,0	50,5	68	50	6	6	4 x M6	0,11
438 044 00	045	110	25,5	8,5	60,5	87	60	9	9	4 x M6	0,20
438 054 00	050	123	47	10,5	85,0	90	70	9	12	4 x M6	0,40
438 064 00	063	175	41	11	86,0	150	115	7	13	4 x M8	0,60
438 084 00	085	205	40	13,0	108,0	176	152	5	16	4 x M10	0,88

Torque Arms HMD/I

Material: Steel sheet, zinc-plated.

Retrofit kit: Torque arm with mounting screws.

The position can be changed by 4x90° (Size 063: 8x45°).



Ordering details: e.g.: Prod. No. 438 035 00, Torque Arm, Gearbox Size 030

Product No.	Gearbox Size	A mm	C ₁ mm	D mm	E mm	F mm	G mm	H mm	I mm	Screws Amount x Size	Weight kg
438 035 00	030	100	118	50	65	7	4	8,2	4	4 x M6	0,21
438 045 00	045	100	113	50	65	7	4	8,2	4	4 x M6	0,21
438 055 00	050	100	118	68	94	7	4	8,2	4	4 x M6	0,26
438 065 00	063	150	180	75	90	9	20	11	6	4 x M8	0,70
438 085 00	085	200	240	110	130	11	25	21	6	4 x M10	1,44

Permissible Radial and Axial Loads

The values are calculated for the middle of the input shaft end also calculating in the output speed n_2 in min^{-1} . F_R is the max. permissible radial load for $F_A = 0$. F_A is the max. permiss. axial load for $F_R = 0$.

Gearbox Size	200 min^{-1}		150 min^{-1}		100 min^{-1}		75 min^{-1}		50 min^{-1}		25 min^{-1}		15 min^{-1}	
	F_R N	F_A N	F_R N	F_A N	F_R N	F_A N	F_R N	F_A N	F_R N	F_A N	F_R N	F_A N	F_R N	F_A N
030	600	120	700	140	800	160	900	180	1000	200	1250	250	1400	280
045	900	180	1000	200	1100	220	1200	240	1400	260	1800	300	2000	400
050	1200	240	1400	280	1500	300	1700	340	1900	380	2500	480	2800	560
063	1800	360	2000	400	2300	460	2500	500	3000	600	3800	700	4000	800
085	2500	500	2900	580	3000	600	3500	700	4000	800	5000	1000	5800	1160

Lubricant Volume in Litre (dm^3)

The gearbox is lubricated for life, using synthetic oil. At normal operating conditions, no change is required. The lubricant volume is the same for all mounting positions. The mounting positions V5

and V6 (worm shaft vertical) are however not recommended for continuous operation.

Size	030	045	050	063	085
Oil volume	0.03	0.09	0.14	0.40	1.20