

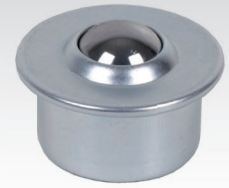
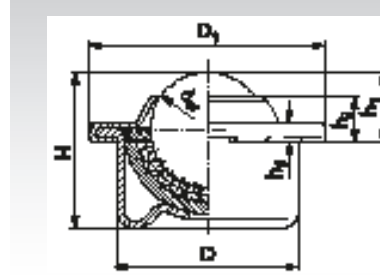
Ball Transfer Units 360 / 363, Steel-Sheet Housing

Material Type 360: Housing: Steel, zinc-plated.
Ball cup: Steel.
Balls: Steel, hardened.

Material Type 363: Stainless steel.



Light duty ball transfer unit for medium high load.
Orientation: Ball up or horizontal. Size 22 and 30 with felt seal.
Without drain hole. Can be used with fixing clip page 439.
Conveying speed max. 1m/sec.
Temperature range -20°C to +70°C.



Other sizes and versions on request.

Ordering Details: e.g.: Product No. 654 360 15, Ball Transfer Unit 360 Size 15

Product No. Type 360	Product No. Type 363	Size dw mm	Load Rating Type 360 N	Load Rating Type 363 N	D mm	D ₁ mm	H mm	h ₁ mm	h ₂ mm	h ₃ mm	Weight Type 360 kg	Weight Type 363 kg
654 360 15	654 363 15	15	600	400	24	31	21	9,5	4,9	2,8	0,041	0,039
654 360 22	654 363 22	22	1600	900	36	45	29,5	9,8	5,9	2,9	0,128	0,125
654 360 30	654 363 30	30	2800	2000	45	55	37	13,8	7	3,6	0,253	0,271
654 360 45	654 363 45	45	6000	2600	62	75	53,5	19,0	10	4,0	0,720	0,710

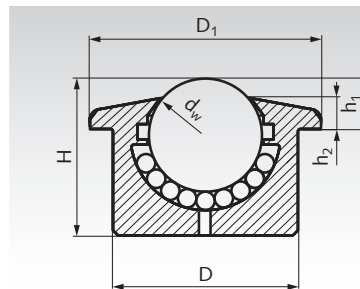
Ball Transfer Units 364 / 367, Solid Steel Housing

Material Type 364: Housing: Steel, zinc-plated.
Ball cup: Steel, case hardened.
Balls: Steel 100Cr6, hardened.

Material Type 367: Stainless steel 1.4021.



Medium duty ball transfer unit for medium high load.
Orientation: Ball up or horizontal. From size 22 with felt seal and drain hole. Can be used with fixing clip page 439.
Conveying speed max. 1.5m/sec.
Temperature range -30°C to +100°C.



Other sizes and versions on request.

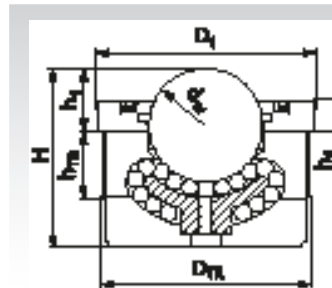
Ordering Details: e.g.: Product No. 654 364 12, Ball Transfer Unit 364 Size 12

Product No. Type 364	Product No. Type 367	Size dw mm	Load Rating Type 364 N	Load Rating Type 367 N	D mm	D ₁ mm	H mm	h ₁ mm	h ₂ mm	Weight Type 364 kg	Weight Type 367 kg
654 364 12	654 367 12	12	250	200	22	27	16,7	8,0	4,8	0,038	0,038
654 364 15	654 367 15	15	600	400	24	31	21,0	9,5	5,5	0,059	0,058
654 364 22	654 367 22	22	1800	1260	36	45	30,5	9,8	6	0,189	0,188
654 364 30	654 367 30	30	3500	2200	45	55	36,8	13,8	8	0,360	0,357
654 364 45	654 367 45	45	6000	3500	62	75	53,5	19,0	10	1,01	1,02

Ball Transfer Units 368, Solid Steel Housing, with Tolerance Ring

Material: Housing: Steel, with KTL "Anti-Oxide" electrophoretic coating.
Ball cup: Steel, case hardened.
Balls: Steel 100Cr6, hardened.

Heavy duty ball transfer unit for high load.
High shock resistance. Very low friction.
Orientation: Anyway.
From size 25.4 with felt seal. With drain hole.
Conveying speed max. 2m/sec.
Temperature range -30°C to +160°C.



Other sizes and versions on request.

Ordering Details: e.g.: Product No. 654 368 12, Ball Transfer Unit 368 Size 12

Product No. Type 368	Size dw mm	Load Rating N	D _{TR} * mm	D ₁ mm	H mm	h ₁ mm	h ₃ mm	h _{TR} mm	Weight kg
654 368 12	12,7	500	22	24	21	6	2,4	12	0,20
654 368 25	25,4	2250	45	49	40	14	6,9	15	0,45
654 368 26	25,4	3850	50	55	44	15	8,6	16	0,70
654 368 38	38,1	11000	65	70	60	25	12,3	20	1,50

* Bore size. Recommended bore tolerance: H9.

Note: Due to unevenness of the running surface, there are often only three rollers carrying the weight. Therefore the chosen load rating should equal at least one third of the load. Max. distance of ball transfer units = edge length of the object divided by 2.5.