

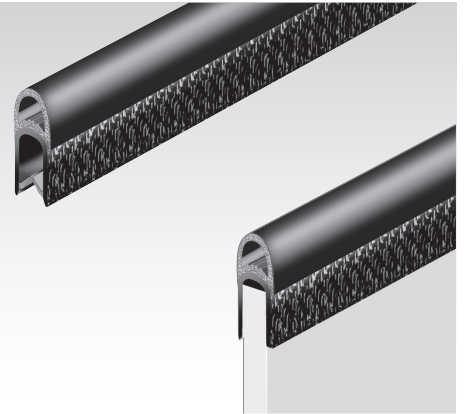
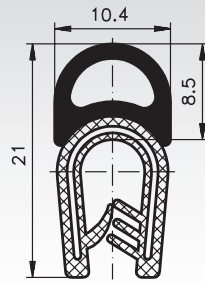
Trim Seals

Material: PVC/EPDM/Steel.

Trim seals are a combination of edge trims made from PVC with a substructure of metal clips and sealed on EPDM-foam rubber.

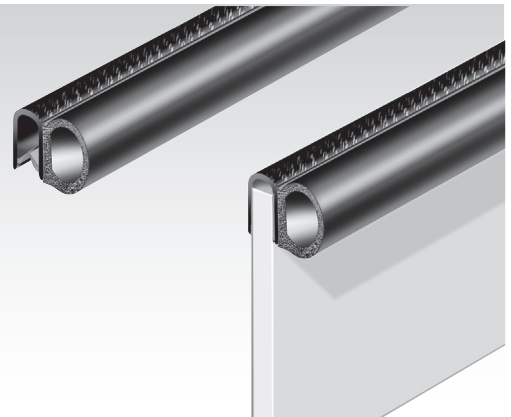
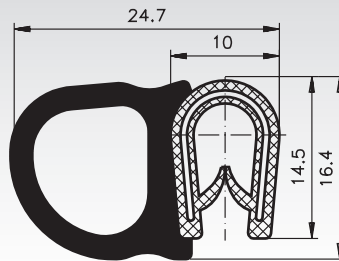
These profiles serve a double function:

1. Easy covering of construction-conditioned sharp edges.
2. The sealing effect. The foam rubber strips or hollow section are highly flexible and can seal doors and lids. The mounting is done as with edge trims.

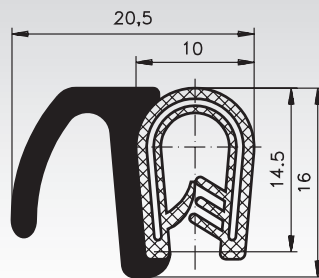


Ordering Details: e.g.: Product No. 687 140 00, Trim Seal

Product No.	Clamp Range mm	Colour	Maximum Length m	Weight g/m
687 140 00	1,0 - 4,0	black	100	175



Product No.	Clamp Range mm	Colour	Maximum Length m	Weight g/m
687 150 00	1,0 - 4,0	black	100	180



Product No.	Clamp Range mm	Colour	Maximum Length m	Weight g/m
687 160 00	1,0 - 4,0	black	100	170

Minimum Bending Radii

Please note that the stated minimum bending radii are only reference values that can vary depending on the material, the clamp range and the application in which the profile is used.

Product No.	a mm	b mm	c mm	d mm
687 140 00	70	80	15	15
687 150 00	50	30	100	120
687 160 00	40	40	150	150

