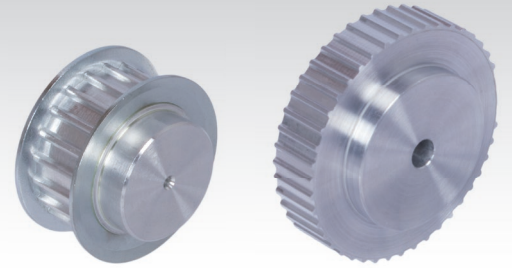
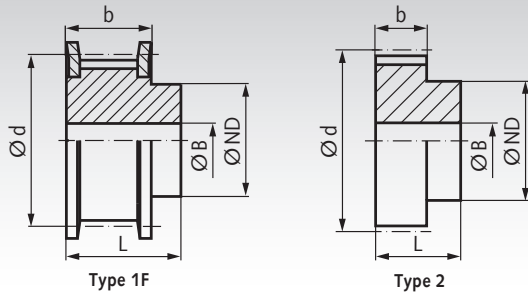


## AT Pulleys, Pitch 10 mm Made from Aluminium



Material: Aluminium similar to EN AW2017A. Flanges zinc-plated steel.

Ordering Details: e.g.: Product No. 168 215 00, Pulley, Pitch AT 10, 15 Teeth, Timing Belt Width 16 mm

### Profile AT 10, Timing Belt Width 16 mm

| Product No.<br>Belt Width<br>16 mm | Type         | Number<br>of teeth | Type | Outside Ø    |              |         | ND<br>mm | b<br>mm | L<br>mm | Pilot Hole<br>B<br>mm | Weight<br>g |
|------------------------------------|--------------|--------------------|------|--------------|--------------|---------|----------|---------|---------|-----------------------|-------------|
|                                    |              |                    |      | Pulley<br>mm | Flange<br>mm | d<br>mm |          |         |         |                       |             |
| 168 215 00                         | 31 AT10/15-2 | 15                 | 1F   | 45,93        | 51           | 47,75   | 32       | 21      | 31      | 8                     | 116         |
| 168 216 00                         | 31 AT10/16-2 | 16                 | 1F   | 49,11        | 54           | 50,93   | 35       | 21      | 31      | 8                     | 134         |
| 168 217 00                         | 31 AT10/17-2 | 17                 | 1F   | 52,29        | 58           | 54,11   | 40       | 21      | 31      | 8                     | 154         |
| 168 218 00                         | 31 AT10/18-2 | 18                 | 1F   | 55,48        | 60           | 57,30   | 40       | 21      | 31      | 8                     | 167         |
| 168 219 00                         | 31 AT10/19-2 | 19                 | 1F   | 58,66        | 66           | 60,48   | 44       | 21      | 31      | 8                     | 184         |
| 168 220 00                         | 31 AT10/20-2 | 20                 | 1F   | 61,84        | 66           | 63,66   | 46       | 21      | 31      | 8                     | 208         |
| 168 222 00                         | 31 AT10/22-2 | 22                 | 1F   | 68,21        | 75           | 70,03   | 52       | 21      | 31      | 8                     | 253         |
| 168 224 00                         | 31 AT10/24-2 | 24                 | 1F   | 74,57        | 83           | 76,39   | 58       | 21      | 31      | 8                     | 288         |
| 168 225 00                         | 31 AT10/25-2 | 25                 | 1F   | 77,76        | 83           | 79,58   | 60       | 21      | 31      | 8                     | 310         |
| 168 226 00                         | 31 AT10/26-2 | 26                 | 1F   | 80,94        | 87           | 82,76   | 60       | 21      | 31      | 8                     | 357         |
| 168 227 00                         | 31 AT10/27-2 | 27                 | 1F   | 84,12        | 91           | 85,94   | 60       | 21      | 31      | 8                     | 364         |
| 168 228 00                         | 31 AT10/28-2 | 28                 | 1F   | 87,31        | 93           | 89,13   | 60       | 21      | 31      | 8                     | 401         |
| 168 230 00                         | 31 AT10/30-2 | 30                 | 1F   | 93,67        | 97           | 95,49   | 60       | 21      | 31      | 8                     | 441         |
| 168 232 00                         | 31 AT10/32-2 | 32                 | 1F   | 100,04       | 106          | 101,86  | 65       | 21      | 31      | 10                    | 493         |
| 168 236 00                         | 31 AT10/36-2 | 36                 | 1F   | 112,77       | 119          | 114,59  | 70       | 21      | 31      | 10                    | 623         |
| 168 240 00                         | 31 AT10/40-2 | 40                 | 1F   | 125,50       | 131          | 127,32  | 80       | 21      | 31      | 10                    | 767         |
| 168 244 00                         | 31 AT10/44-0 | 44                 | 2    | 138,24       | -            | 140,06  | 88       | 21      | 31      | 10                    | 993         |
| 168 248 00                         | 31 AT10/48-0 | 48                 | 2    | 150,97       | -            | 152,79  | 95       | 21      | 31      | 16                    | 1090        |
| 168 260 00                         | 31 AT10/60-0 | 60                 | 2    | 189,17       | -            | 190,99  | 110      | 21      | 31      | 16                    | 1701        |
| 168 272 00                         | 31 AT10/72-0 | 72                 | 2    | 227,36       | -            | 229,18  | 140      | 21      | 31      | 16                    | 2740        |
| 168 284 00                         | 31 AT10/84-0 | 84                 | 2    | 265,56       | -            | 267,38  | 160      | 21      | 31      | 18                    | 3400        |
| 168 296 00                         | 31 AT10/96-0 | 96                 | 2    | 303,76       | -            | 305,58  | 180      | 21      | 31      | 18                    | 4820        |

### Profile AT 10, Timing Belt Width 25 mm

| Product No.<br>Belt Width<br>25 mm | Type         | Number<br>of teeth | Type | Outside Ø    |              |         | ND<br>mm | b<br>mm | L<br>mm | Pilot Hole<br>B<br>mm | Weight<br>g |
|------------------------------------|--------------|--------------------|------|--------------|--------------|---------|----------|---------|---------|-----------------------|-------------|
|                                    |              |                    |      | Pulley<br>mm | Flange<br>mm | d<br>mm |          |         |         |                       |             |
| 168 315 00                         | 40 AT10/15-2 | 15                 | 1F   | 45,93        | 51           | 47,75   | 32       | 30      | 40      | 8                     | 152         |
| 168 316 00                         | 40 AT10/16-2 | 16                 | 1F   | 49,11        | 54           | 50,93   | 35       | 30      | 40      | 8                     | 176         |
| 168 317 00                         | 40 AT10/17-2 | 17                 | 1F   | 52,29        | 58           | 54,11   | 40       | 30      | 40      | 8                     | 200         |
| 168 318 00                         | 40 AT10/18-2 | 18                 | 1F   | 55,48        | 60           | 57,30   | 40       | 30      | 40      | 8                     | 224         |
| 168 319 00                         | 40 AT10/19-2 | 19                 | 1F   | 58,66        | 66           | 60,48   | 44       | 30      | 40      | 8                     | 247         |
| 168 320 00                         | 40 AT10/20-2 | 20                 | 1F   | 61,84        | 66           | 63,66   | 46       | 30      | 40      | 8                     | 276         |
| 168 322 00                         | 40 AT10/22-2 | 22                 | 1F   | 68,21        | 75           | 70,03   | 52       | 30      | 40      | 8                     | 337         |
| 168 324 00                         | 40 AT10/24-2 | 24                 | 1F   | 74,57        | 83           | 76,39   | 58       | 30      | 40      | 8                     | 392         |
| 168 325 00                         | 40 AT10/25-2 | 25                 | 1F   | 77,76        | 83           | 79,58   | 60       | 30      | 40      | 8                     | 422         |
| 168 326 00                         | 40 AT10/26-2 | 26                 | 1F   | 80,94        | 87           | 82,76   | 60       | 30      | 40      | 8                     | 477         |
| 168 327 00                         | 40 AT10/27-2 | 27                 | 1F   | 84,12        | 91           | 85,94   | 60       | 30      | 40      | 8                     | 536         |
| 168 328 00                         | 40 AT10/28-2 | 28                 | 1F   | 87,31        | 93           | 89,13   | 60       | 30      | 40      | 8                     | 540         |
| 168 330 00                         | 40 AT10/30-2 | 30                 | 1F   | 93,65        | 97           | 95,49   | 60       | 30      | 40      | 8                     | 640         |
| 168 332 00                         | 40 AT10/32-2 | 32                 | 1F   | 100,04       | 106          | 101,86  | 65       | 30      | 40      | 10                    | 693         |
| 168 336 00                         | 40 AT10/36-2 | 36                 | 1F   | 112,77       | 119          | 114,59  | 70       | 30      | 40      | 10                    | 873         |
| 168 340 00                         | 40 AT10/40-2 | 40                 | 1F   | 125,50       | 131          | 127,32  | 80       | 30      | 40      | 10                    | 1067        |
| 168 344 00                         | 40 AT10/44-0 | 44                 | 2    | 138,24       | -            | 140,06  | 88       | 30      | 40      | 10                    | 1350        |
| 168 348 00                         | 40 AT10/48-0 | 48                 | 2    | 150,97       | -            | 152,79  | 95       | 30      | 40      | 16                    | 1516        |
| 168 360 00                         | 40 AT10/60-0 | 60                 | 2    | 189,17       | -            | 190,99  | 110      | 30      | 40      | 16                    | 2339        |
| 168 372 00                         | 40 AT10/72-0 | 72                 | 2    | 227,36       | -            | 229,18  | 140      | 30      | 40      | 16                    | 3693        |
| 168 384 00                         | 40 AT10/84-0 | 84                 | 2    | 265,56       | -            | 267,38  | 160      | 30      | 40      | 18                    | 5040        |
| 168 396 00                         | 40 AT10/96-0 | 96                 | 2    | 303,76       | -            | 305,58  | 180      | 30      | 40      | 18                    | 6580        |