

Spur Gears Made from POM, White, with One-Sided Hub, Straight Tooth System, Milled Teeth

Tooth quality 10d DIN 58405.

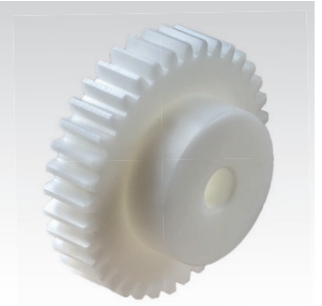
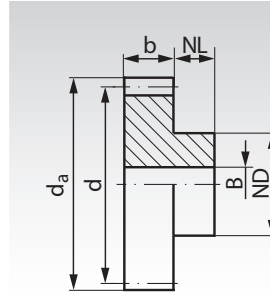
Pressure angle 20°.

Untoleranced dimensions in accordance with DIN ISO 2768 middle.

Temperature limit: continuous 100°C, only short time 140°C.

Water absorption (satiated) 0.5% Cws.

Other material reference values page 864.

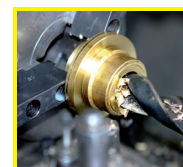


Ordering Details: e.g.: Product No. 292 010 00, Spur Gear, POM, Module 0.7, 10 Teeth

Module 0.7 Tooth Width b = 5 mm

| Product No. | Number of teeth | b mm | d _a mm | d mm | NL mm | ND mm | B ^{JS10} mm | perm. MT* Ncm | Weight g |
|-------------|-----------------|------|-------------------|------|-------|-------|----------------------|---------------|----------|
| 292 010 00 | 10 | 5 | 8,4 | 7 | 6 | 5 | 3 | 1,9 | 0,30 |
| 292 012 00 | 12 | 5 | 9,8 | 8,4 | 6 | 6 | 3 | 2,6 | 0,50 |
| 292 013 00 | 13 | 5 | 10,5 | 9,1 | 6 | 7 | 3 | 3,0 | 0,65 |
| 292 014 00 | 14 | 5 | 11,2 | 9,8 | 6 | 8 | 3 | 3,4 | 0,85 |
| 292 015 00 | 15 | 5 | 11,9 | 10,5 | 6 | 8 | 3 | 3,8 | 0,88 |
| 292 016 00 | 16 | 5 | 12,6 | 11,2 | 6 | 8 | 3 | 4,3 | 0,95 |
| 292 017 00 | 17 | 5 | 13,3 | 11,9 | 6 | 8 | 3 | 4,4 | 1,00 |
| 292 018 00 | 18 | 5 | 14 | 12,6 | 6 | 10 | 3 | 5,1 | 1,40 |
| 292 019 00 | 19 | 5 | 14,7 | 13,3 | 6 | 10 | 3 | 5,8 | 1,40 |
| 292 020 00 | 20 | 5 | 15,4 | 14 | 6 | 10 | 4 | 6,6 | 1,50 |
| 292 021 00 | 21 | 5 | 16,1 | 14,7 | 6 | 10 | 4 | 7,4 | 1,60 |
| 292 022 00 | 22 | 5 | 16,8 | 15,4 | 6 | 12 | 4 | 8,2 | 2,10 |
| 292 023 00 | 23 | 5 | 17,5 | 16,1 | 6 | 12 | 4 | 9,2 | 2,10 |
| 292 024 00 | 24 | 5 | 18,2 | 16,8 | 6 | 12 | 4 | 10,1 | 2,20 |
| 292 025 00 | 25 | 5 | 18,9 | 17,5 | 6 | 12 | 4 | 11,2 | 2,40 |
| 292 026 00 | 26 | 5 | 19,6 | 18,2 | 6 | 12 | 4 | 12,2 | 2,50 |
| 292 027 00 | 27 | 5 | 20,3 | 18,9 | 6 | 12 | 4 | 13,4 | 2,70 |
| 292 028 00 | 28 | 5 | 21 | 19,6 | 6 | 12 | 4 | 14,6 | 2,80 |
| 292 030 00 | 30 | 5 | 22,4 | 21 | 6 | 15 | 4 | 17,1 | 3,60 |
| 292 032 00 | 32 | 5 | 23,8 | 22,4 | 6 | 15 | 4 | 20,0 | 4,10 |
| 292 035 00 | 35 | 5 | 25,9 | 24,5 | 6 | 15 | 4 | 24,5 | 4,50 |
| 292 036 00 | 36 | 5 | 26,6 | 25,2 | 6 | 15 | 4 | 26,0 | 4,70 |
| 292 038 00 | 38 | 5 | 28 | 26,6 | 6 | 15 | 4 | 29,5 | 5,20 |
| 292 040 00 | 40 | 5 | 29,4 | 28 | 6 | 15 | 4 | 33,5 | 5,50 |
| 292 042 00 | 42 | 5 | 30,8 | 29,4 | 6 | 20 | 5 | 37,5 | 7,10 |
| 292 045 00 | 45 | 5 | 32,9 | 31,5 | 6 | 20 | 5 | 44,0 | 7,80 |
| 292 048 00 | 48 | 5 | 35 | 33,6 | 6 | 20 | 5 | 51,0 | 8,20 |
| 292 050 00 | 50 | 5 | 36,4 | 35 | 6 | 20 | 5 | 56,0 | 9,00 |
| 292 052 00 | 52 | 5 | 37,8 | 36,4 | 6 | 20 | 5 | 61,5 | 9,60 |
| 292 054 00 | 54 | 5 | 39,2 | 37,8 | 6 | 20 | 5 | 65,0 | 9,00 |
| 292 055 00 | 55 | 5 | 39,9 | 38,5 | 6 | 20 | 5 | 66,0 | 8,50 |
| 292 056 00 | 56 | 5 | 40,6 | 39,2 | 6 | 20 | 5 | 67,5 | 10,60 |
| 292 060 00 | 60 | 5 | 43,4 | 42 | 8 | 20 | 5 | 72,5 | 12,70 |
| 292 064 00 | 64 | 5 | 46,2 | 44,8 | 8 | 20 | 5 | 77,5 | 14,40 |
| 292 065 00 | 65 | 5 | 46,9 | 45,5 | 8 | 20 | 5 | 79,0 | 14,60 |
| 292 070 00 | 70 | 5 | 50,4 | 49 | 8 | 20 | 5 | 85,0 | 16,30 |
| 292 072 00 | 72 | 5 | 51,8 | 50,4 | 8 | 20 | 6 | 87,0 | 17,00 |
| 292 075 00 | 75 | 5 | 53,9 | 52,5 | 8 | 20 | 6 | 90,5 | 18,10 |
| 292 080 00 | 80 | 5 | 57,4 | 56 | 8 | 20 | 6 | 96,5 | 20,10 |
| 292 085 00 | 85 | 5 | 60,9 | 59,5 | 8 | 20 | 6 | 101,5 | 22,20 |
| 292 090 00 | 90 | 5 | 64,4 | 63 | 8 | 20 | 6 | 109,0 | 24,70 |
| 292 096 00 | 96 | 5 | 68,6 | 67,2 | 8 | 25 | 8 | 116,0 | 29,20 |
| 292 100 00 | 100 | 5 | 71,4 | 70 | 8 | 25 | 8 | 121,0 | 30,50 |
| 292 114 00 | 114 | 5 | 81,2 | 79,8 | 8 | 25 | 8 | 137,5 | 39,80 |
| 292 120 00 | 120 | 5 | 85,4 | 84 | 8 | 25 | 8 | 144,5 | 43,20 |

* Basis of calculations see page 197.



Reworking within
24h-service possible.
Custom made parts
on request.