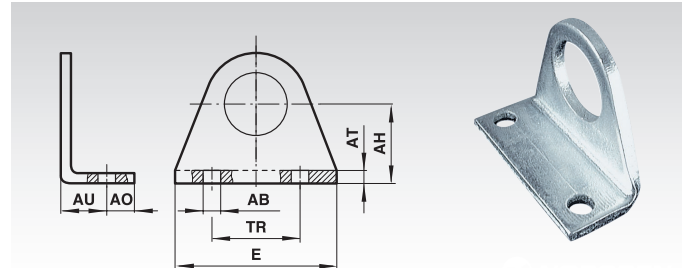


Foot Plate Mountings

Material:

Steel, zinc-plated.

Mounting element at the bearing or end cover.



Ordering Details: e.g.: Product-No. 810 020 10, Foot Plate Mounting for Cylinder Ø 10 mm

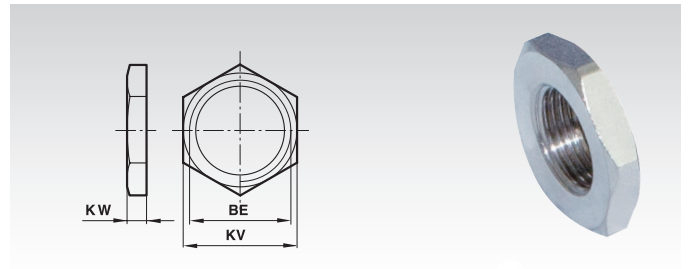
Product No.	Cyl. Ø mm	AB mm	AH mm	AO mm	AT mm	AU mm	E mm	TR mm	Weight g
810 020 10	10	4,5	16	6	2	10	35	25	20
810 020 12	12/16	5,5	20	6	3	13	43	32	30
810 020 20	20/25	6,6	25	7,5	4	16	53	40	50

Nuts for the Piston Rod Bearing

Material:

Steel, zinc-plated.

Mounting element at the bearing or end cover.



Ordering Details: e.g.: Product-No. 810 024 10, Nut on Piston Rod Bearing for Cylinder Ø 10 mm

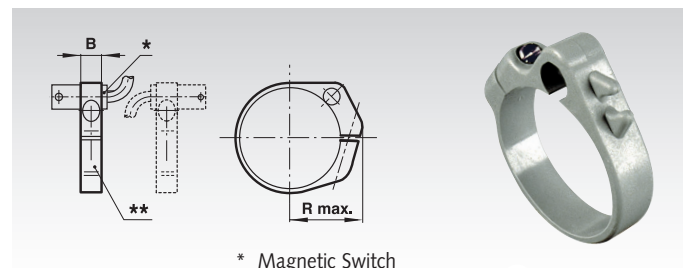
Product No.	Cyl. Ø mm	BE	KV mm	KW mm	Weight g
810 024 10	10	M12x1,25	19	6	10
810 024 12	12/16	M16x1,5	22	5	9
810 024 20	20/25	M22x1,5	27	8	17

Mounting Elements for Magnetic Switch at Profile Barrel for ≥ 15 mm Stroke

Materials:

Mounting: Plastic.

Screw: Steel, zinc-plated.



Ordering Details: e.g.: Product No. 810 017 10, Mounting Elements for Magnetic Switch ≥ 15 mm Stroke for Cylinder Ø 10 mm

* Magnetic Switch
** Mounting Element

Product No.	Cyl. Ø mm	B mm	R max. mm	Weight g
810 017 10	10	8	16	3
810 017 12	12	8	18	4
810 017 16	16	10	20	6
810 017 20	20	10	22	6
810 017 25	25	10	24	7