

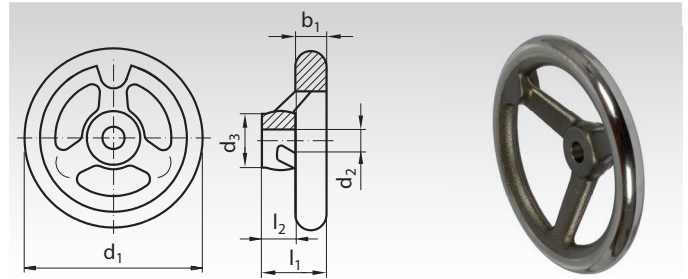
## Spoked Handwheels DIN 950 with Smooth Rim and Slanted Spokes

**Material:** Grey cast iron GG25. Rim turned and polished.  
Hub surfaces machined.

Number of spokes:  
3 spokes for sizes up to Ø 200.  
5 spokes for sizes from Ø 225.

**Version B/A:** Without keyway.

**Version N/A:** With keyway DIN 6885-1.



Ordering Details: e.g.: 672 208 00, Spoked Handwheel DIN 950, Version B/A, 80 mm

Product No. Vers. B/A	Product No. Vers. N/A	d <sub>1</sub> mm	d <sub>2</sub> <sup>H7</sup> mm	d <sub>3</sub> mm	l <sub>1</sub> mm	l <sub>2</sub> mm	Weight kg
672 208 00	672 208 01	80	10	24	29	16	0,45
672 210 00	672 210 01	100	10	26	33	17	0,56
672 212 00	672 212 01	125	12	28	36	18	0,85
672 214 00	672 214 01	140	14	30	39	19	1,10
672 216 00	672 216 01	160	14	32	40	20	1,35
672 218 00	672 218 01	180	16	35	43	22	1,80
672 220 00	672 220 01	200	18	38	45	24	2,30
672 222 00	672 222 01	225	20	42	48	26	3,30
672 225 00	672 225 01	250	22	45	50	28	4,20
672 228 00	672 228 01	280	24	50	53	30	5,20
672 231 00	672 231 01	315	26	53	56	33	6,50
672 236 00	672 236 01	360	28	60	59	35	8,90
672 240 00	672 240 01	400	30	65	63	38	11,20

## Spoked Handwheels DIN 950 with Smooth Rim and Slanted Spokes, with threaded lug.

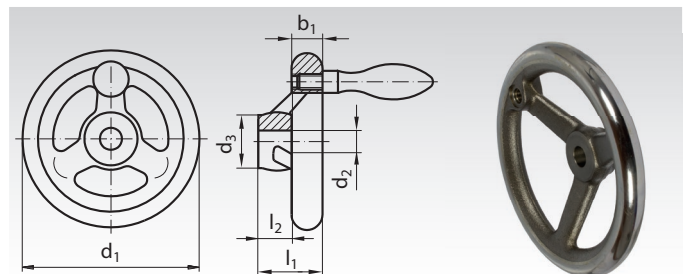
**Material:** Grey cast iron GG25. Rim turned and polished.  
Hub surfaces machined.

Number of spokes:  
3 spokes for sizes up to Ø 200.  
5 spokes for sizes from Ø 225.

**Version B/G:** Without keyway.

**Version N/G:** With keyway DIN 6885-1.

The handle has to be ordered separately.



Version B/G with mounted handle.  
Handle has to be ordered separately.

Ordering Details: e.g.: 672 408 00, Spoked Handwheel DIN 950, B/G, 80 mm  
(Matching handle DIN 39, Product No. 662 116 00 or DIN 98, Product No. 663 116 00)

Product No. Version B/G	Product No. Version N/G	d <sub>1</sub> mm	d <sub>2</sub> <sup>H7</sup> mm	d <sub>3</sub> mm	l <sub>1</sub> mm	l <sub>2</sub> mm	Weight kg	Product No.	
								matchig revolving handle steel* rigid DIN 39	rotatable DIN 98
672 408 00	672 408 01	80	10	24	29	16	0,45	662 116 00	663 116 00
672 410 00	672 410 01	100	10	26	33	17	0,56	662 116 00	663 116 00
672 412 00	672 412 01	125	12	28	36	18	0,85	662 120 00	663 120 00
672 414 00	672 414 01	140	14	30	39	19	1,1	662 120 00	663 120 00
672 416 00	672 416 01	160	14	32	40	20	1,35	662 125 00	663 125 00
672 418 00	672 418 01	180	16	35	43	22	1,8	662 125 00	663 125 00
672 420 00	672 420 01	200	18	38	45	24	2,3	662 125 00	663 125 00
672 422 00	672 422 01	225	20	42	48	26	3,3	662 125 00	663 125 00
672 425 00	672 425 01	250	22	45	50	28	4,2	662 132 00	663 132 00
672 428 00	672 428 01	280	24	50	53	30	5,2	662 132 00	663 132 00
672 431 00	672 431 01	315	26	53	56	33	6,5	662 132 00	663 132 00
672 436 00	672 436 01	360	28	60	59	35	8,9	662 132 00	663 132 00
672 440 00	672 440 01	400	30	65	63	38	11,2	662 132 00	663 132 00

\*Handles page 680.