

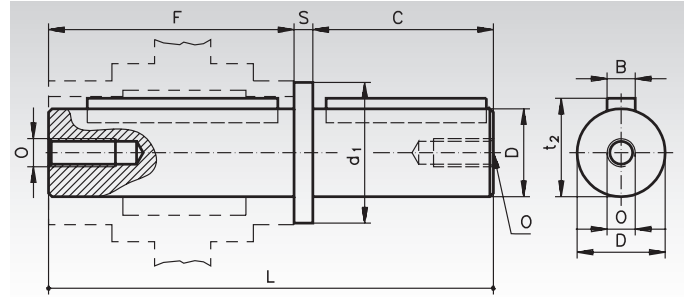
Accessories Worm Gear Units H/I

Push-In Type Output Shafts, Single Sided

Material: Steel.

To change the gearboxes H/I over from hollow shaft to solid shaft. The shaft is only pushed in and secured with the enclosed cover disc and mounting screw. The shaft can be pushed in either left or right.

Ordering details: e.g.: Prod. No. 422 031 01, Push-In Type Output Shaft, Single-Sided, Gearbox Size 031



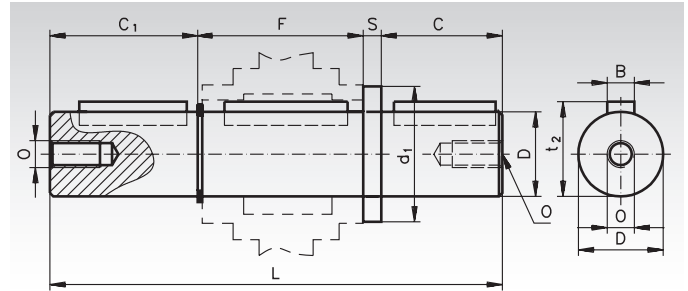
Product No.	Gearbox Size	B mm	C mm	D ^{h6} mm	d ₁ mm	F mm	L mm	O mm	S mm	t ₂ mm	Weight kg
422 031 01	031	5	30	14	18,5	62	94,5	M6x16	2,5	16,3	0,16
422 040 01	040	6	40	18	23,5	77	120,0	M6x16	3,0	20,8	0,27
422 050 01	050	8	50	25	31,5	90	143,5	M8x22	3,5	28,3	0,59
422 063 01	063	8	50	25	31,5	111	165,0	M8x22	4,0	28,3	0,68
422 075 01	075	8	60	28	34,5	119	183,0	M8x22	4,0	31,3	1,05

Push-In Type Output Shafts, Double Sided

Material: Stahl.

To change the gearboxes H/I over from hollow shaft to double-sided solid shaft. The shaft is only pushed in and secured with the enclosed retaining ring.

Ordering details: e.g.: Prod. No. 422 031 02, Push-In Type Output Shaft, Double Sided, Gearbox Size 031



Product No.	Gearbox Size	B mm	C mm	C ₁ mm	D ^{h6} mm	d ₁ mm	F mm	L mm	O mm	S mm	t ₂ mm	Weight kg
422 031 02	031	5	30	29,0	14	18,5	64,0	125,5	M6x16	2,5	16,3	0,18
422 040 02	040	6	40	38,8	18	23,5	79,2	161,0	M6x16	3,0	20,8	0,32
422 050 02	050	8	50	50,0	25	31,5	93,2	196,7	M8x22	3,5	28,3	0,77
422 063 02	063	8	50	48,8	25	31,5	113,2	216,0	M8x22	4,0	28,3	0,98
422 075 02	075	8	60	58,8	28	34,5	121,0	244,0	M8x22	4,0	31,3	1,49

Permissible Radial and Axial Forces

The values are calculated for the centre of the output shaft end, also calculating in the transmission ratio. F_R is the max. radial force for $F_A = 0$.

F_A is the max. permissible axial force for $F_R = 0$.

Gearbox Size	i = 7.5		i = 10		i = 15		i = 20		i = 25		i = 30		i = 40		i = 50		i = 65		i = 80		i = 100	
	F_R	F_A	F_R	F_A	F_R	F_A	F_R	F_A	F_R	F_A	F_R	F_A	F_R	F_A	F_R	F_A	F_R	F_A	F_R	F_A	F_R	F_A
031	750	150	775	115	800	160	850	170	900	180	950	190	1000	200	1100	220	1200	240	1300	260	1450	290
040	1150	230	1200	240	1250	250	1350	270	1500	300	1600	320	1700	340	1800	360	1950	390	2100	420	2300	460
050	1200	240	1400	280	1600	320	1900	380	2100	420	2500	500	2800	560	3000	600	3200	640	3200	640	3200	640
063	1250	250	1700	340	1750	350	2000	400	2500	500	2700	540	3000	600	3250	650	3500	700	3700	740	3900	780
075	1300	260	1900	380	2300	460	2500	500	3000	600	3200	640	3500	700	3800	760	4100	820	4400	880	4700	940

Lubricant Volume in Litre (dm³)

The gearboxes are lubricated for life using synthetic oil. Under normal operating conditions, no oil change is required. The lubricant volume is identical for all mounting positions.

Size	031	040	050	063	075
Oil quantity	0.05	0.07	0.15	0.4	0.6