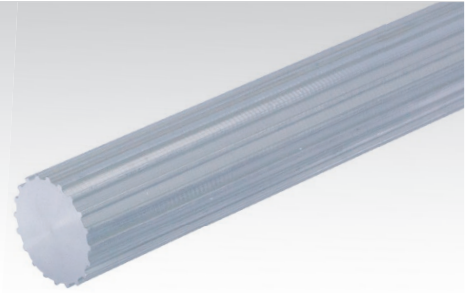
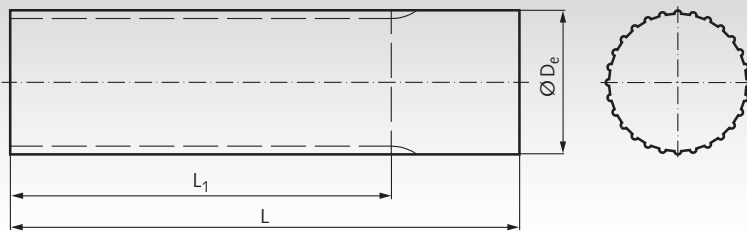


Timing Bars, for Timing Belts Profile AT



Material: Aluminium similar to EN AW2017A.

Ordering Details: e.g.: Product No. 163 915 00, Timing Bar AT3, No. of Teeth 15

Other types and materials on request.

Profile AT 3

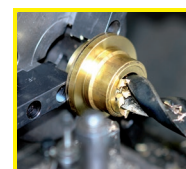
Product No.	Number of teeth	De mm	L1 mm	L mm	Weight kg
163 915 00	15	13,91	100	125	0,05
163 916 00	16	14,87	100	125	0,06
163 917 00	17	15,82	100	125	0,07
163 918 00	18	16,78	100	125	0,08
163 919 00	19	17,73	140	140	0,10
163 920 00	20	18,69	140	140	0,11
163 921 00	21	19,64	140	140	0,12
163 922 00	22	20,60	140	140	0,13
163 923 00	23	21,55	140	140	0,14
163 924 00	24	22,51	140	140	0,16
163 925 00	25	23,46	140	140	0,17
163 926 00	26	24,42	140	140	0,18
163 927 00	27	25,37	140	140	0,20
163 928 00	28	26,33	140	140	0,21
163 930 00	30	28,24	140	140	0,25
163 932 00	32	30,15	160	160	0,32
163 934 00	34	32,06	160	160	0,36
163 935 00	35	33,01	160	160	0,38
163 936 00	36	33,97	160	160	0,41
163 938 00	38	35,88	160	160	0,45
163 940 00	40	37,79	160	160	0,50
163 942 00	42	39,70	160	160	0,55
163 944 00	44	41,61	160	160	0,61
163 948 00	48	45,43	160	160	0,73
163 950 00	50	47,34	160	160	0,79
163 952 00	52	49,25	160	160	0,85
163 956 00	56	53,07	160	160	0,99
163 960 00	60	56,89	160	160	1,14
163 965 00	65	61,66	160	160	1,34
163 970 00	70	66,44	160	160	1,55
163 972 00	72	68,34	160	160	1,64
163 984 00	84	79,80	160	160	2,00
163 996 00	96	91,26	160	160	2,70

Profile AT 5

Product No.	Number of teeth	De mm	L1 mm	L mm	Weight kg
166 912 00	12	17,88	140	140	0,08
166 913 00	13	19,47	140	140	0,10
166 914 00	14	21,06	140	140	0,12
166 915 00	15	22,65	140	140	0,14
166 916 00	16	24,24	140	140	0,15
166 917 00	17	25,84	140	140	0,18
166 918 00	18	27,43	140	140	0,20
166 919 00	19	29,02	140	140	0,23
166 920 00	20	30,61	160	160	0,30
166 921 00	21	32,20	160	160	0,33
166 922 00	22	33,79	160	160	0,36
166 923 00	23	35,39	160	160	0,40
166 924 00	24	36,98	160	160	0,44
166 925 00	25	38,57	160	160	0,47
166 926 00	26	40,16	160	160	0,51
166 927 00	27	41,75	160	160	0,55
166 928 00	28	43,34	160	160	0,60
166 930 00	30	46,53	160	160	0,69
166 932 00	32	49,71	160	160	0,81
166 934 00	34	52,89	160	160	0,90
166 936 00	36	56,08	160	160	1,02
166 938 00	38	59,26	160	160	1,14
166 940 00	40	62,44	160	160	1,28
166 942 00	42	65,63	160	160	1,41
166 944 00	44	68,81	160	160	1,55
166 948 00	48	75,17	160	160	1,85
166 952 00	52	81,54	160	160	2,19
166 956 00	56	87,91	160	160	2,55
166 958 00	58	91,09	160	160	2,74
166 960 00	60	94,27	160	160	2,94
166 964 00	64	100,64	160	160	3,36
166 972 00	72	113,37	160	160	4,29
166 984 00	84	132,47	160	160	5,80
166 996 00	96	151,57	160	160	6,50

Profile AT 10

Product No.	Number of teeth	De mm	L1 mm	L mm	Weight kg
168 915 00	15	45,93	160	160	0,62
168 916 00	16	49,11	160	160	0,72
168 917 00	17	52,29	160	160	0,82
168 918 00	18	55,48	160	160	0,94
168 919 00	19	58,66	160	160	1,05
168 920 00	20	61,84	160	160	1,17
168 921 00	21	65,03	160	160	1,31
168 922 00	22	68,21	160	160	1,44
168 923 00	23	71,39	160	160	1,60
168 924 00	24	74,57	160	160	1,75
168 925 00	25	77,76	160	160	1,91
168 926 00	26	80,94	160	160	2,06
168 927 00	27	84,12	160	160	2,23
168 928 00	28	87,31	160	160	2,42
168 930 00	30	93,67	160	160	2,79
168 932 00	32	100,04	160	160	3,20
168 934 00	34	106,41	160	160	3,65
168 936 00	36	112,77	160	160	4,09
168 938 00	38	119,14	160	160	4,59
168 940 00	40	125,50	160	160	5,16
168 942 00	42	131,87	160	160	5,65
168 944 00	44	138,24	160	160	6,22
168 948 00	48	150,97	160	160	7,45
168 952 00	52	163,70	160	160	8,93
168 956 00	56	176,43	160	160	10,39
168 960 00	60	189,17	160	160	11,78
168 970 00	70	221,00	160	160	16,18



**Reworking within
24h-service possible.
Custom made parts
on request.**