

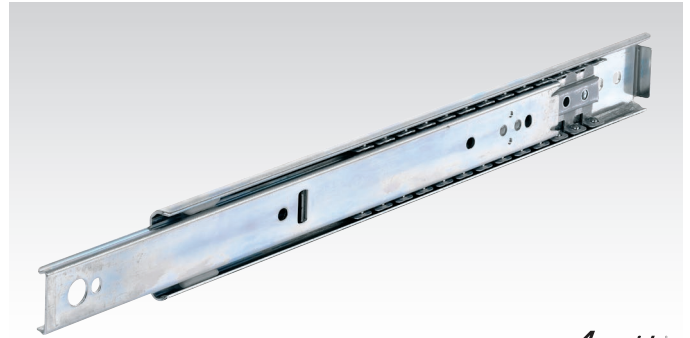
Slides DZ 0204, Width 9.5 mm, to 65 kg, 3/4 Extension

Material:

Slide elements: Cold-rolled steel, bright zinc-plated.
Ball retainers: Cold-rolled steel, zinc-plated.
Balls: Hardened steel.

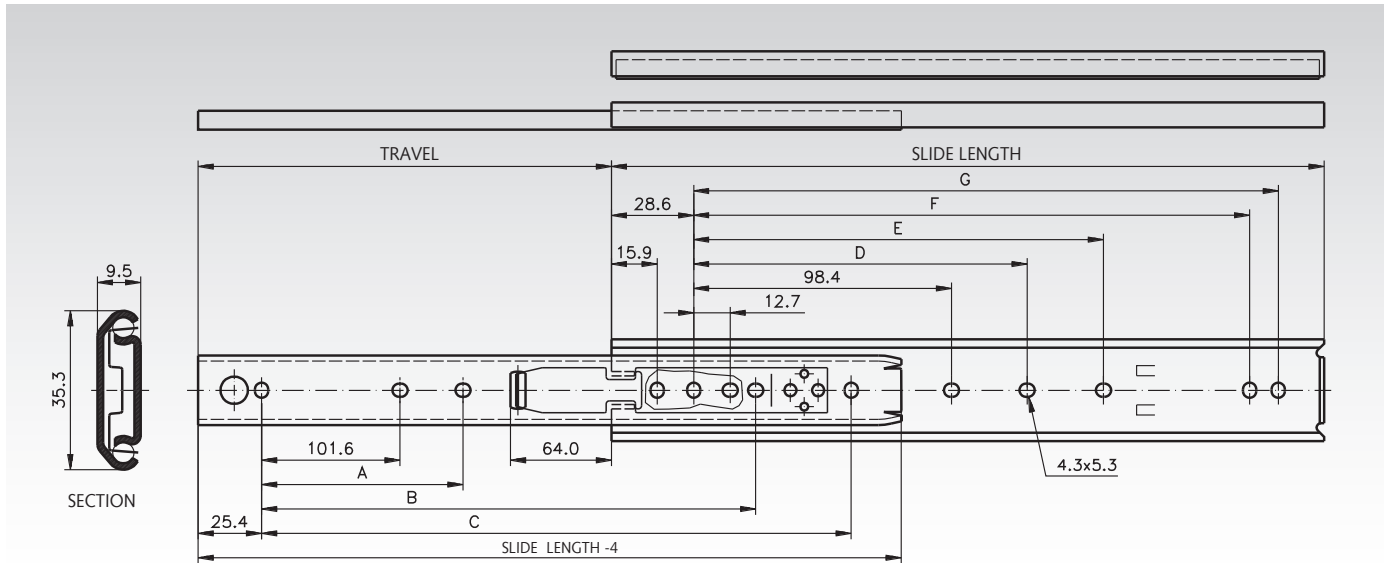
Telescopic ball bearing slides for applications in the industrial and electronics sector.

- Can be mounted on both sides.
- Bracket mount for electrical cabinets on request.
- Fast disconnection.
- Lock-out function.
- Service life 10,000 cycles.
- Temperature range: -20°C to +70°C.



Accuride

Ordering details: e.g.: Prod. No. 649 002 12, Slides DZ 0204



Product No. per Pair	Slide Length mm	Travel +/-3.2 mm	A mm	B mm	C mm	D mm	E mm	F mm	G mm	Load Rating per Pair kg	Weight per Pair kg
649 002 12	305	202	-	215,9	254,0	-	136,5	247,6	260,3	65	0,63
649 002 14	356	253	-	266,7	304,8	-	187,3	298,4	311,1	65	0,73
649 002 16	406	303	-	317,5	355,6	-	238,1	349,2	361,9	60	0,84
649 002 18	457	329	203,2	342,9	406,4	200,0	288,9	400,0	412,7	55	0,93
649 002 20	508	380	228,6	393,7	457,2	225,4	339,7	450,8	463,5	50	1,04
649 002 22	559	405	254,0	419,1	508,0	250,8	390,5	501,6	514,3	40	1,14
649 002 24	610	431	279,4	444,5	558,8	276,2	441,3	552,4	565,1	35	1,26
649 002 26	660	482	304,8	495,3	609,6	301,6	492,1	603,2	615,9	30	1,35
649 002 28	711	507	330,2	520,7	660,4	327,0	542,9	654,0	666,7	30	1,48

Note

Recommended mounts: M4 screw.
Use all mounting positions to achieve the max. load rating.