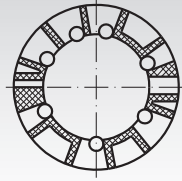
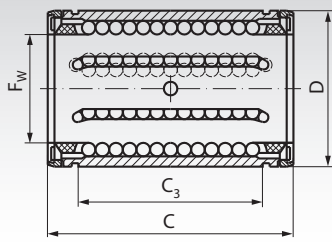


## Linear Bearings KB-3 ISO Series 3, Economy-Line, Closed Design



Linear bearings from reliable brand in good quality at low price.  
These linear bearings can be fitted inside a customer's housing or as spare parts for our closed Economy-Line units.

These bearings are self-aligning up to  $\pm 0,5^\circ$ .

All bearings must be lubricated before use.  
Recommended shaft tolerance h6, housing tolerance H6 or JS6.

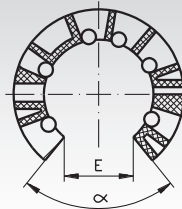
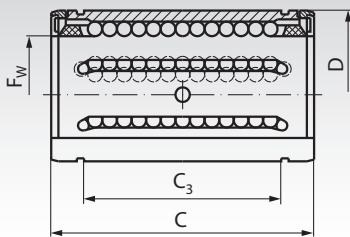
With wiping double-lip seals.

Ordering Details: e.g.: Product No. 646 112 02, Linear Bearing KB-3, Economy-Line, Internal  $\varnothing$  12 mm

| Product No.<br>with Seals | F <sub>w</sub><br>mm | D<br>mm | C <sup>-0,02</sup><br>mm | C <sub>3</sub> <sup>-0,02</sup><br>mm | Load rating<br>dyn. C<br>N | Load rating<br>stat. C <sub>0</sub><br>N | Weight<br>g | Product No.                           | Weight |
|---------------------------|----------------------|---------|--------------------------|---------------------------------------|----------------------------|--|-------------|---------------------------------------|--------|
|                           |                      |         |                          |                                       |                            |  |             | Retaining Ring<br>DIN 471<br>Page 582 | g      |
| 646 112 02                | 12                   | 22      | 32                       | 20,3                                  | 1020                       | 1290                                     | 16          | 617 422 00                            | 1,7    |
| 646 116 02                | 16                   | 26      | 36                       | 22,3                                  | 1250                       | 1550                                     | 21          | 617 426 00                            | 2,1    |
| 646 120 02                | 20                   | 32      | 45                       | 28,3                                  | 2090                       | 2630                                     | 43          | 617 432 00                            | 3,6    |
| 646 125 02                | 25                   | 40      | 58                       | 40,4                                  | 3780                       | 4720                                     | 85          | 617 440 00                            | 6,3    |
| 646 130 02                | 30                   | 47      | 68                       | 48,4                                  | 5470                       | 6810                                     | 130         | 617 447 00                            | 7,8    |
| 646 140 02                | 40                   | 62      | 80                       | 56,3                                  | 6590                       | 8230                                     | 260         | 617 462 00                            | 14,4   |
| 646 150 02                | 50                   | 75      | 100                      | 72,3                                  | 10800                      | 13500                                    | 460         | 617 475 00                            | 21,0   |

Shaft steel page 466. Shaft blocks page 475.  
Precision housings page 481.

## Linear Bearings KB-3-0 ISO Series 3, Economy-Line, Open Design



Linear bearings from reliable brand in good quality at low price.  
These linear bearings can be fitted inside a customer's housing or as spare parts for our open Economy-Line units.

These bearings are self-aligning up to  $\pm 0,5^\circ$ .

All bearings must be lubricated before use.  
Recommended shaft tolerance h6, housing tolerance H6 or JS6.

With wiping double-lip seals.

Ordering Details: e.g.: Product No. 646 112 03, Linear Bearing KB-3, Economy-Line, Open Design, Internal  $\varnothing$  12 mm

| Product No.<br>with Seals | F <sub>w</sub><br>mm | D<br>mm | C <sup>-0,02</sup><br>mm | C <sub>3</sub> <sup>-0,02</sup><br>mm | E<br>mm | $\alpha$<br>° | Load rating<br>dyn. C<br>N | Load rating<br>stat. C <sub>0</sub><br>N | Weight<br>g |
|---------------------------|----------------------|---------|--------------------------|---------------------------------------|---------|---------------|----------------------------|--|-------------|
|                           |                      |         |                          |                                       |         |               |                            |  |             |
| 646 116 03                | 16                   | 26      | 36                       | 22,3                                  | 9,0     | 68            | 1250                       | 1550                                     | 17          |
| 646 120 03                | 20                   | 32      | 45                       | 28,3                                  | 9,0     | 55            | 2090                       | 2630                                     | 36          |
| 646 125 03                | 25                   | 40      | 58                       | 40,4                                  | 11,5    | 57            | 3780                       | 4720                                     | 71          |
| 646 130 03                | 30                   | 47      | 68                       | 48,4                                  | 14,0    | 57            | 5470                       | 6810                                     | 114         |
| 646 140 03                | 40                   | 62      | 80                       | 56,3                                  | 19,5    | 56            | 6590                       | 8230                                     | 230         |
| 646 150 03                | 50                   | 75      | 100                      | 72,3                                  | 22,5    | 54            | 10800                      | 13500                                    | 390         |

Shaft steel with shaft support page 467.  
Precision housings page 481.