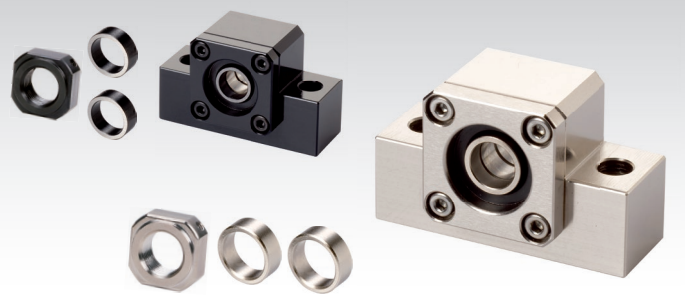
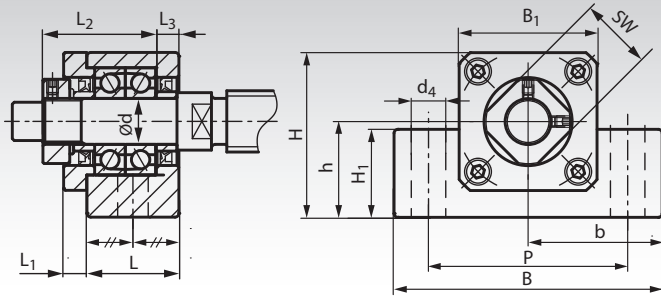


Pillow Block Bearing Units EK, for Fixed Side



Material: Housing from steel, all surfaces machined, black oxide finished or nickel plated. With quality rolling bearings from Japan.

Ready-to-install housing bearing unit for trapezoidal and ballscrew spindle drives, for the fixed side. With two angular contact ball bearings, lightly preloaded, with seals.

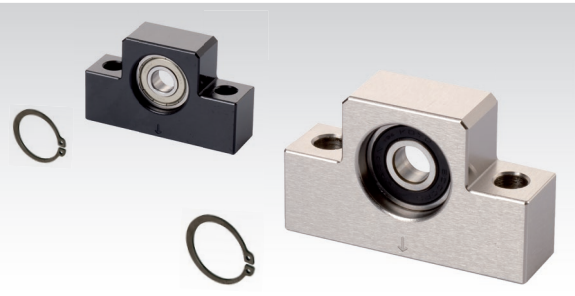
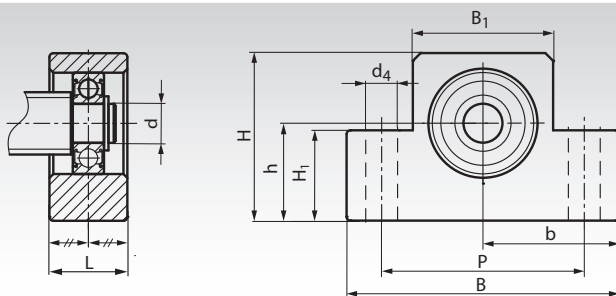
Types EK06 and EK08 sealed only on the side without the nut. With 2 mounting holes. Locknut and distance bushes are included. Due to the standard dimensions, these units can also replace parts of other suppliers. Spindle reworking (on request) and bearing load data see page 417.

Matching counterpart for support side: Pillow Block Bearing EF.

Ordering Details: e.g.: Product No. 642 003 06, Ball Pillow Block Bearing Unit EK 6, Bore 6mm, black oxidized

Product No. black oxidized	Product No. nickel plated	Type	d mm	L mm	L ₁ mm	L ₂ mm	L ₃ mm	B mm	H mm	b ^{±0,02} mm	h ^{±0,02} mm	B ₁ mm	H ₁ mm	P mm	d ₄ mm	SW mm	Weight kg
642 003 06	642 013 06	EK 06	6	20	5,5	22	3,5	42	25	21	13	20	12	30	5,2	12	0,14
642 003 08	642 013 08	EK 08	8	23	7	26	4	52	32	26	17	27	16	38	6,3	14	0,24
642 003 10	642 013 10	EK 10	10	24	6	29,5	6	70	43	35	25	36	24	52	9	16	0,46
642 003 12	642 013 12	EK 12	12	24	6	29,5	6	70	43	35	25	36	24	52	9	19	0,44
642 003 15	642 013 15	EK 15	15	25	6	32	5	80	50	40	30	40	25	60	11	22	0,55
642 003 20	642 013 20	EK 20	20	42	10	50	10	95	58	47,5	30	56	25	75	11	30	1,35

Pillow Block Bearing Units EF, for Support Side



Material: Housing from steel, all surfaces machined, black oxide finished or nickel plated. With quality rolling bearing from Japan.

Ready-to-install housing bearing unit for trapezoidal and ballscrew spindle drives, for the support side. With one movable single row deep groove ball bearing. With 2 mounting holes.

Retaining ring for fixing on the spindle end is included. Due to the standard dimensions, these units can also replace parts of other suppliers.

Spindle reworking (on request) and bearing load data see page 417. Matching counterpart for fixed side: Pillow Block Bearing EK.

Ordering Details: e.g.: Product No. 642 004 06, Ball Pillow Block Bearing Unit EF 6, Bore 6mm, black oxidized

Product No. black oxidized	Product No. nickel plated	Type	d mm	L mm	B mm	H mm	b ^{±0,02} mm	h ^{±0,02} mm	B ₁ mm	H ₁ mm	P mm	d ₄ mm	Weight kg
642 004 06	642 014 06	EF 06	6	12	42	25	21	13	20	12	30	5,2	0,07
642 004 08	642 014 08	EF 08	6	14	52	32	26	17	27	16	38	6,3	0,13
642 004 10	642 014 10	EF 10	8	20	70	43	35	25	36	24	52	9	0,33
642 004 12	642 014 12	EF 12	10	20	70	43	35	25	36	24	52	9	0,32
642 004 15	642 014 15	EF 15	15	20	80	49	40	30	41	25	60	9	0,38
642 004 20	642 014 20	EF 20	20	26	95	58	47,5	30	56	25	75	11	0,63

With quality rolling bearings from Japan.

Spindle reworking and bearing load data page 417.