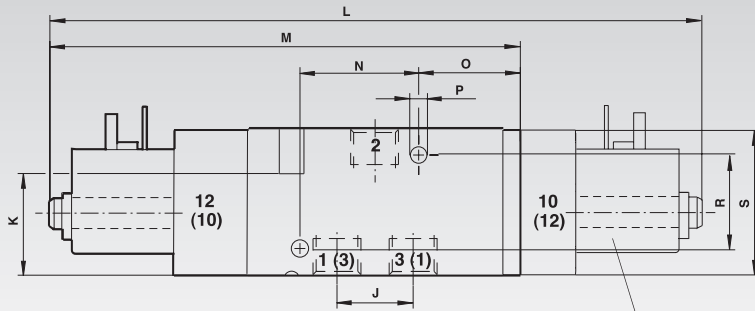
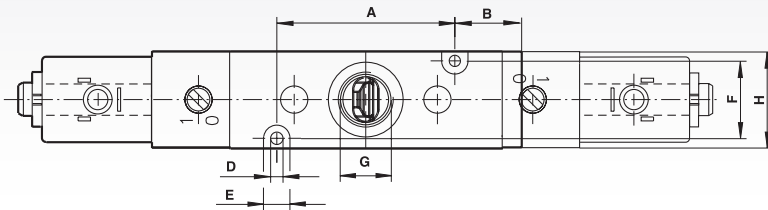


3/2 Solenoid Valves, Single Pilot, Normally closed



Version with twin pilot on request.



Materials:

Housing and base plates: Aluminium, Spindle: Stainless steel; Piston, spacers and cover: Plastic; Static and dynamic seals: NBR; Screws: zinc-plated; Springs: Stainless Steel.

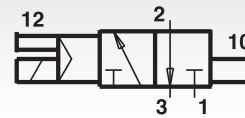
Standard pilot controls with replaceable solenoid system for all common voltages.

The valves are suitable for lubricated or non-lubricated standard compressed air.

At normal operating conditions the system has a lifespan of 50 million switching cycles.

The valve system (cartridge) is an optimised version of the million-times proven sealing system. Manual override with detent.

Symbol



Ordering Details: e.g.: Product No. 850 118 11, 3/2 Solenoid Valve, Connecting Thread G 1/8, Voltage 24 V

Product No.	Connection	Voltage	Flow (l/min)	Operating pressure (bar)	Weight g	Product No. Socket*	Product No. Spare Solenoid*
850 118 11	G 1/8	24V DC	750	2 - 8	220	858 000 01	858 000 06
850 118 12	G 1/8	230V 50/60Hz	750	2 - 8	220	858 000 01	858 000 07
850 128 11	G 1/4	24V DC	1300	2 - 8	290	858 000 01	858 000 06
850 128 12	G 1/4	230V 50/60Hz	1300	2 - 8	290	858 000 01	858 000 07

* See page 829.

Dim.	A	B	C	D	E	F	G	H	J	K	L	M	N	O	P	R	S	T	U
G 1/8	35	16	-	3,2	6,5	17	G 1/8	22	16,2	28	-	114	25	25	4,5	26	35	-	-
G 1/4	46	18	-	3,2	6,5	20	G 1/4	25	21	28	-	130	32	29	4,5	26	40	-	-

Solenoid and Voltage Selection

22mm solenoid with plug interface according to DIN 43650 Form B.

Voltage: 24V DC.

Solenoid power inrush/holding: 2W.

Voltage: 230V 50/60Hz.

Solenoid power inrush/holding: 6/5VA.