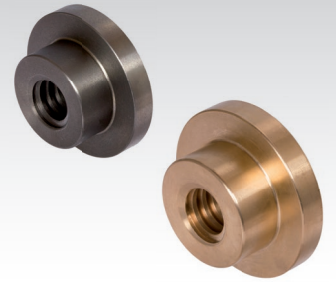
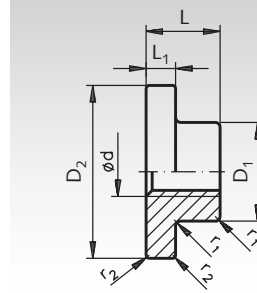
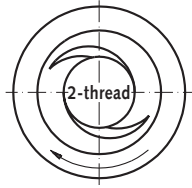


Round Flange Nuts with Metric ISO-Trapezoidal Thread DIN 103, Double-thread

Material: Grey cast iron GG25
Red brass Rg7 (CuSn7Zn4Pb7-C).

Tolerance zone 7H.



Ordering Details: e.g.: Product No. 645 440 12, round flange nut GG25, Tr. 12 x 6 P3

Double-thread, Right Hand

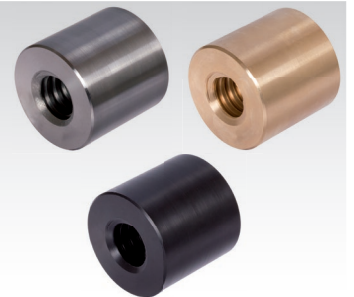
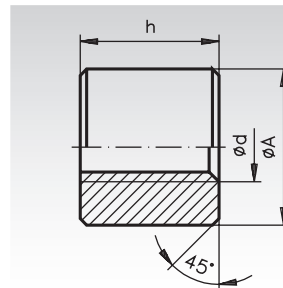
Product No. Grey Cast Iron	Product No. Red Brass	Tr. Thread Ød mm	Ø ^{h11}		DIN ISO 2768m		r ₁ mm	r ₂ mm	Weight Grey Cast Iron kg	Weight Red Brass kg
			D ₁ mm	D ₂ mm	L mm	L ₁ mm				
645 440 12	645 441 12	12 x 6 P3	22	40	18	6	0,5	0,3	0,08	0,09
645 440 16	645 441 16	16 x 8 P4	30	50	22	10	1,0	0,5	0,18	0,22
645 440 20	645 441 20	20 x 8 P4	36	60	24	10	1,0	0,5	0,26	0,32
645 440 24	645 441 24	24 x 10 P5	45	70	30	11	1,0	0,5	0,45	0,54
645 440 30	645 441 30	30 x 12 P6	58	88	47	14	1,0	0,5	1,04	1,26
645 440 40	645 441 40	40 x 14 P7	80	137	63	18	2,0	1,0	3,04	3,67

Comparison of friction coefficients see page 445.

Round Nuts with Metric ISO-Trapezoidal Thread DIN 103, Double-Thread

Material: Steel C35Pb.
Red brass Rg7 (CuSn7Zn4Pb7-C).
Plastic (PA6.6 with MoS2).

Tolerance zone 7H.

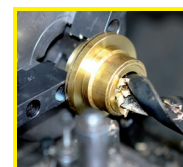


Ordering Details: e.g.: Product No. 645 612 00, Round Nut, Steel, Tr. 12 x 6 P3

Double-thread, Right Hand

Product No. Steel h = 1,5 x d	Product No. Red Brass h = 2 x d	Product No. Plastic h = 2 x d	Tr. Thread Ø d mm	DIN ISO 2768m		DIN 668 ØA ^{h11} * mm	Weight Steel kg	Weight Red Brass kg	Weight Plastic kg
				h=1,5xd mm	h=2xd mm				
645 612 00	645 812 00	645 912 00	12 x 6 P3	18	24	26	0,06	0,1	0,02
645 616 00	645 816 00	645 916 00	16 x 8 P4	24	32	36	0,16	0,24	0,04
645 620 00	645 820 00	645 920 00	20 x 8 P4	30	40	45	0,3	0,5	0,06
645 624 00	645 824 00	645 924 00	24 x 10 P5	36	48	50	0,44	0,7	0,08
645 630 00	645 830 00	645 930 00	30 x 12 P6	45	60	60	0,8	1,2	0,16
645 640 00	645 840 00	645 940 00	40 x 14 P7	60	80	80	1,8	2,8	0,36

* Tolerance h11 does not apply to plastic nuts.



**Reworking within
24h-service possible.
Custom made parts
on request.**