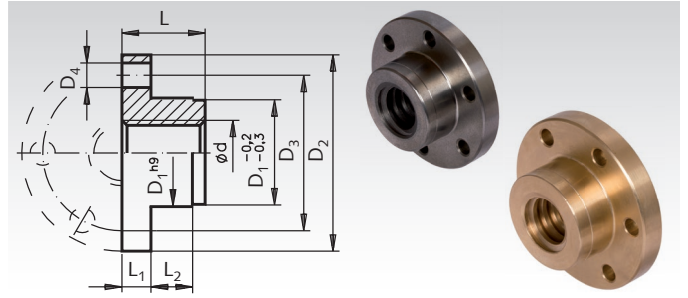
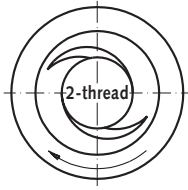


## Ready-to-Install Flange Nuts with Metric ISO-Trapezoidal Thread DIN 103, Double-thread

**Material:** Grey cast iron GG25  
Red brass Rg7 (CuSn7Zn4Pb7-C).  
Tolerance zone 7H.



Ordering Details: e.g.: Product No. 645 770 16, flange nut GG25, Tr. 16 x 8 P4

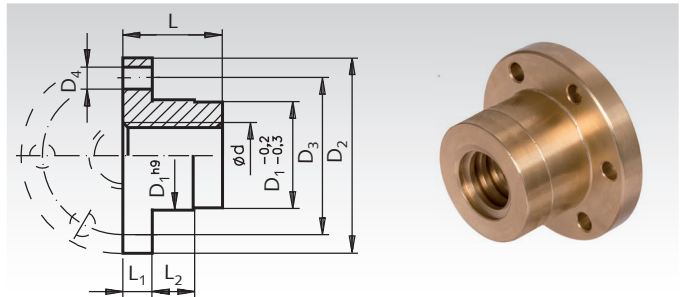
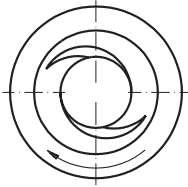
### Double-thread, Right Hand

Product No. Grey Cast Iron	Product No. Red Brass	Tr. Thread Ød mm	D <sub>1</sub> mm	D <sub>2</sub> mm	D <sub>3</sub> mm	DIN ISO 2768 m				Weight Grey Cast kg	Weight Red Brass kg
						6 x D <sub>4</sub> mm	L mm	L <sub>1</sub> mm	L <sub>2</sub> mm		
645 770 16	645 771 16	16 x 8 P4	26	48	38	6	20	7	10	0,12	0,13
645 770 20	645 771 20	20 x 8 P4	30	58	45	7	22	8	12	0,17	0,20
645 770 24	645 771 24	24 x 10 P5	40	72	58	7	28	10	12	0,36	0,42
645 770 30	645 771 30	30 x 12 P6	50	82	68	7	44	12	15	0,85	0,95
645 770 40	645 771 40	40 x 14 P7	60	130	95	9	60	15	20	2,00	2,18

Comparison of friction coefficients see page 445.

## Ready-to-Install Flange Nuts EFM with Metric ISO-Trapezoidal Thread DIN 103, Double-thread

**Material:** Red brass Rg7 (CuSn7Zn4Pb7-C).  
Tolerance zone 7H.



Ordering Details: e.g.: Product No. 645 775 12, flange nut EFM, Tr. 12 x 6 P3

### Double-thread, Right Hand

Product No. Red Brass	Tr. Thread Ød mm	D <sub>1</sub> mm	D <sub>2</sub> mm	D <sub>3</sub> mm	DIN ISO 2768 m				Weight kg
					6 x D <sub>4</sub> mm	L mm	L <sub>1</sub> mm	L <sub>2</sub> mm	
645 775 12	12 x 6 P3	28	48	38	6	28	12	8	0,24
645 775 16	16 x 8 P4	28	48	38	6	44	12	8	0,28
645 775 20	20 x 8 P4	32	55	45	7	44	12	8	0,35
645 775 24	24 x 10 P5	32	55	45	7	44	12	8	0,30
645 775 30	30 x 12 P6	38	62	50	7	46	14	8	0,42
645 775 40	40 x 14 P7	63	95	78	9	73	16	10	1,82

Comparison of friction coefficients see page 445.